

## HUMAN SIRPA PROTEIN, HFC-HIS TAG

货号: 11137

产品全名: 人 SIRPα 蛋白

规格: 10/50/100 μg

基因符号 SHPS1;SIRPA;CD172A;BIT;MFR;MYD1;P84;PTPNS

目标蛋白: SIRPα

**UNIPROT ID:** P78324

**描述:** Recombinant Human SIRPα with C-terminal human Fc and 6xHis tag

**背景:** Tyrosine-protein phosphatase non-receptor type substrate 1 (SHPS1) is also known as CD172 antigen-like family member A (CD172a), Macrophage fusion receptor, MyD-1 antigen, Signal-regulatory protein alpha (SIRPA or SIRP alpha) or p84, is a member of the SIRP family, and also belongs to the immunoglobulin superfamily. SIRP alpha is Ubiquitous and highly expressed in brain. SIRPA / CD172a is immunoglobulin-like cell surface receptor for CD47 and acts as docking protein and induces translocation of PTPN6, PTPN11 and other binding partners from the cytosol to the plasma membrane. SIRPA / SHPS-1 supports adhesion of cerebellar neurons, neurite outgrowth and glial cell attachment and may play a key role in intracellular signaling during synaptogenesis and in synaptic function. By similarity, SIRPA / MyD1 involved in the negative regulation of receptor tyrosine kinase-coupled cellular responses induced by cell adhesion, growth factors or insulin and mediates negative regulation of phagocytosis, mast cell activation and dendritic cell activation. CD47 binding prevents maturation of immature dendritic cells and inhibits cytokine production by mature dendritic cells.

**物种/宿主:** HEK293

**分子量:** The protein has a predicted molecular mass of 70-98 kDa after removal of the signal peptide.

**分子特征:** SIRPα(Glu31-Tyr373) hFc(Glu99-Ala330) 6×His tag

**纯化:** The purity of the protein is greater than 95% as determined by SDS-PAGE and Coomassie blue staining.

**Formulation & Reconstitution:** Lyophilized from nanodisc solubilization buffer (20 mM Tris-HCl, 150 mM NaCl, pH 8.0). Normally 5% – 8% trehalose is added as protectants before lyophilization.

**储存和运输:** Store at -20°C to -80°C for 12 months in lyophilized form. After reconstitution, if not intended for use within a month, aliquot and store at -80°C (Avoid repeated freezing and thawing). Lyophilized proteins are shipped at ambient temperature.

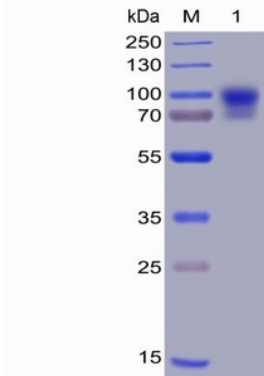


Figure 1. Human SIRP $\alpha$ , hFc-His Tag on SDS-PAGE under reducing condition.

## Human SIRP $\alpha$ , hFc-His tagged protein ELISA

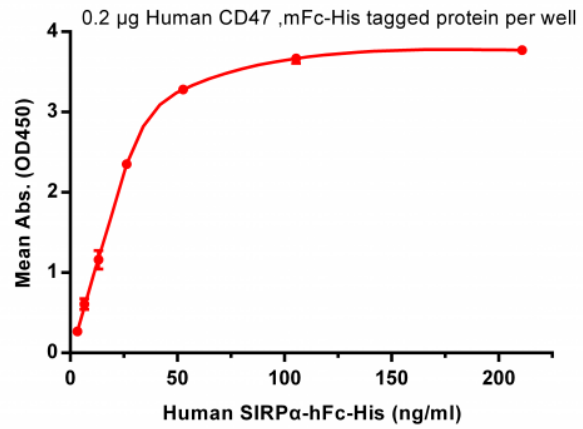


Figure 2. ELISA plate pre-coated by 2  $\mu$ g/ml (100  $\mu$ l/well) Human CD47, mFc-His tagged protein 11136 can bind its native ligand Human SIRP $\alpha$ , hFc-His tagged protein (11137) in a linear range of 3.3-26.37 ng/ml.

## Human SIRP $\alpha$ , hFc-His tagged protein ELISA

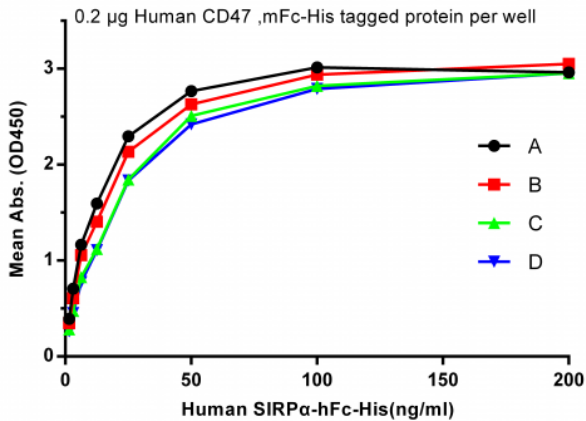


Figure 3. A: Human SIRP $\alpha$ , hFc-His tagged protein without freeze-thaw treatment. B: Human SIRP $\alpha$ , hFc-His tagged protein after one freeze-thaw cycle. C: Human SIRP $\alpha$ , hFc-His tagged protein after three freeze-thaw cycles. D: Human SIRP $\alpha$ , hFc-His tagged protein after five freeze-thaw cycles.

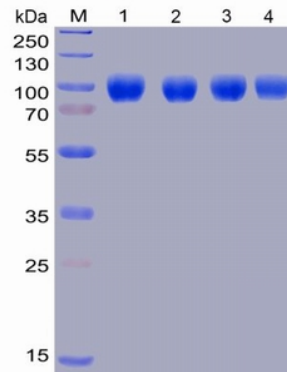


Figure 4. Lane 1: Human SIRP $\alpha$ , hFc-His tagged protein without freeze-thaw treatment, Lane 2: Human SIRP $\alpha$ , hFc-His tagged protein after one freeze-thaw cycle, Lane 3: Human SIRP $\alpha$ , hFc-His tagged protein after three freeze-thaw cycles, Lane 4: Human SIRP $\alpha$ , hFc-His tagged protein after five freeze-thaw cycles.