

## HUMAN SIGLEC10 PROTEIN, HIS TAG

货号: 11211

产品全名: 人 SIGLEC10 蛋白

规格: 10/50/100 µg

基因符号 SIGLEC10;Siglec-10;SLG2;PRO940;MGC126774

目标蛋白: SIGLEC10

**UNIPROT ID:** Q96LC7

**描述:** Recombinant Human SIGLEC10 protein with C-terminal 6xHis tag

**背景:** SIGLECs are members of the immunoglobulin superfamily that are expressed on the cell surface. Most SIGLECs have 1 or more cytoplasmic immune receptor tyrosine-based inhibitory motifs, or ITIMs. SIGLECs are typically expressed on cells of the innate immune system, with the exception of the B-cell expressed SIGLEC6 (MIM 604405).

**物种/宿主:** HEK293

**分子量:** The protein has a predicted molecular mass of 59.0 kDa after removal of the signal peptide. The apparent molecular mass of SIGLEC10-His is approximately 70-100 kDa due to glycosylation.

**分子特征:** SIGLEC10(Met17-Thr546) 6xHis tag

**纯化:** The purity of the protein is greater than 95% as determined by SDS-PAGE and Coomassie blue staining.

**Formulation & Reconstitution:** Lyophilized from nanodisc solubilization buffer (20 mM Tris-HCl, 150 mM NaCl, pH 8.0). Normally 5% – 8% trehalose is added as protectants before lyophilization.

**储存和运输:** Store at -20°C to -80°C for 12 months in lyophilized form. After reconstitution, if not intended for use within a month, aliquot and store at -80°C (Avoid repeated freezing and thawing). Lyophilized proteins are shipped at ambient temperature.

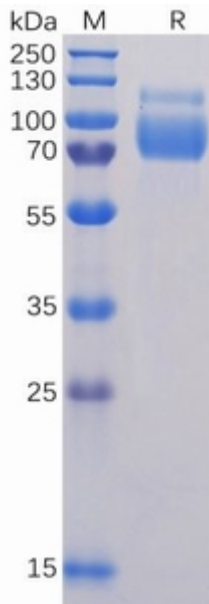


Figure 1. Human SIGLEC10 Protein, His Tag on SDS-PAGE under reducing condition.