

HUMAN SEZ6L2 PROTEIN, HIS TAG

货号: 11883

产品全名: 人 SEZ6L2 蛋白

规格: 10/50/100 µg

基因符号 BSRPA;PSK-1

目标蛋白: SEZ6L2

UNIPROT ID: Q6UXD5

描述: Recombinant Human SEZ6L2 Protein with C-terminal 6xHis tag

背景: This gene encodes a seizure-related protein that is localized on the cell surface. The gene is located in a region of chromosome 16p11.2 that is thought to contain candidate genes for autism spectrum disorders (ASD), though there is no evidence directly implicating this gene in ASD. Increased expression of this gene has been found in lung cancers, and the protein is therefore considered to be a novel prognostic marker for lung cancer.

Alternative splicing of this gene results in multiple transcript variants. [provided by RefSeq, Aug 2011]

物种/宿主: HEK293

分子量: The protein has a predicted molecular mass of 88.2 kDa after removal of the signal peptide. The apparent molecular mass of SEZ6L2-His is approximately 100-130 kDa due to glycosylation.

分子特征: SEZ6L2(Leu28-Asn844) 6xHis tag

纯化: The purity of the protein is greater than 85% as determined by SDS-PAGE and Coomassie blue staining.

Formulation & Reconstitution: Lyophilized from nanodisc solubilization buffer (20 mM Tris-HCl, 150 mM NaCl, pH 8.0). Normally 5% – 8% trehalose is added as protectants before lyophilization.

储存和运输: Store at -20°C to -80°C for 12 months in lyophilized form. After reconstitution, if not intended for use within a month, aliquot and store at -80°C (Avoid repeated freezing and thawing). Lyophilized proteins are shipped at ambient temperature.

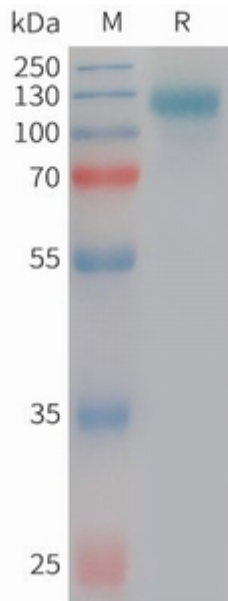


Figure 1. Human SEZ6L2 Protein, His Tag on SDS-PAGE under reducing condition.