

HUMAN PD-L1 PROTEIN, HIS TAG

货号: 11290

产品全名: 人 PD-L1 蛋白

规格: 10/50/100 µg

基因符号 PD-L1;CD274;B7-H1;PDCD1L1;PDCD1LG1

目标蛋白: PD-L1

UNIPROT ID: Q9NZQ7

描述: Recombinant human PD-L1 protein with C-terminal 6xHis tag

背景: This gene encodes an immune inhibitory receptor ligand that is expressed by hematopoietic and non-hematopoietic cells, such as T cells and B cells and various types of tumor cells. The encoded protein is a type I transmembrane protein that has immunoglobulin V-like and C-like domains. Interaction of this ligand with its receptor inhibits T-cell activation and cytokine production. During infection or inflammation of normal tissue, this interaction is important for preventing autoimmunity by maintaining homeostasis of the immune response. In tumor microenvironments, this interaction provides an immune escape for tumor cells through cytotoxic T-cell inactivation. Expression of this gene in tumor cells is considered to be prognostic in many types of human malignancies, including colon cancer and renal cell carcinoma. Alternative splicing results in multiple transcript variants.

物种/宿主: HEK293

分子量: The protein has a predicted molecular mass of 26.0 kDa after removal of the signal peptide. The apparent molecular mass of PDL1-His is approximately 33-35 kDa due to glycosylation.

分子特征: PD-L1(Phe19-Arg238) 6×His tag

纯化: The purity of the protein is greater than 95% as determined by SDS-PAGE and Coomassie blue staining.

Formulation & Reconstitution: Lyophilized from nanodisc solubilization buffer (20 mM Tris-HCl, 150 mM NaCl, pH 8.0). Normally 5% – 8% trehalose is added as protectants before lyophilization.

储存和运输: Store at -20°C to -80°C for 12 months in lyophilized form. After reconstitution, if not intended for use within a month, aliquot and store at -80°C (Avoid repeated freezing and thawing). Lyophilized proteins are shipped at ambient temperature.

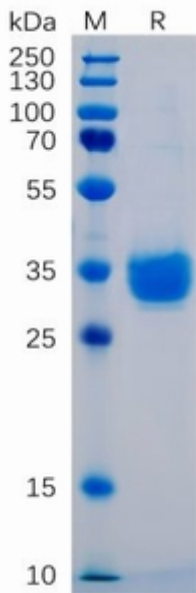


Figure 1. Human PD-L1 Protein, His Tag on SDS-PAGE under reducing condition.