

## HUMAN PD-1 PROTEIN, MFC-HIS TAG

货号: 11153

产品全名: 人 PD-1 蛋白

规格: 10/50/100  $\mu$ g

基因符号 PDCD1;PDI;CD279;SLEB2

目标蛋白: PD-1

**UNIPROT ID:** Q15116

**描述:** Recombinant human PD-1 protein with C-terminal mouse Fc and 6xHis tag

**背景:** This protein is expressed in pro-B-cells and is thought to play a role in their differentiation. In mice, expression of this gene is induced in the thymus when anti-CD3 antibodies are injected and large numbers of thymocytes undergo apoptosis. Mice deficient for this gene bred on a BALB/c background developed dilated cardiomyopathy and died from congestive heart failure. These studies suggest that this gene product may also be important in T cell function and contribute to the prevention of autoimmune diseases.

**物种/宿主:** HEK293

**分子量:** The protein has a predicted molecular mass of 43.5 kDa after removal of the signal peptide.

**分子特征:** PD-1(Phe24-Vall70) mFc(Pro99-Lys330) 6xHis tag

**纯化:** The purity of the protein is greater than 95% as determined by SDS-PAGE and Coomassie blue staining.

**Formulation & Reconstitution:** Lyophilized from nanodisc solubilization buffer (20 mM Tris-HCl, 150 mM NaCl, pH 8.0). Normally 5% – 8% trehalose is added as protectants before lyophilization.

**储存和运输:** Store at  $-20^{\circ}\text{C}$  to  $-80^{\circ}\text{C}$  for 12 months in lyophilized form. After reconstitution, if not intended for use within a month, aliquot and store at  $-80^{\circ}\text{C}$  (Avoid repeated freezing and thawing). Lyophilized proteins are shipped at ambient temperature.

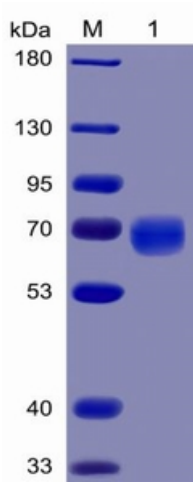


Figure 1. Human PD-1 Protein, mFc-His Tag on SDS-PAGE under reducing condition.

### Human PD1, mFc Tagged protein ELISA

0.2  $\mu$ g of Human PD1, mFc Tagged protein per well

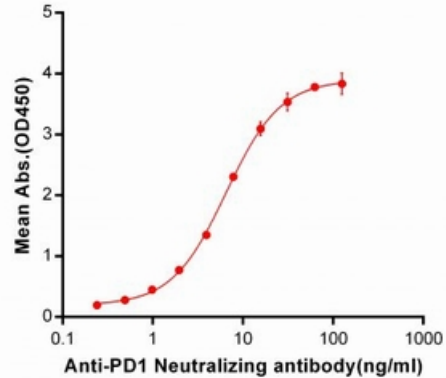


Figure 2. ELISA plate pre-coated by 2  $\mu$ g/ml (100  $\mu$ l/well) Human PD1, mFc-His tagged protein (11153) can bind Anti-PD-1 Neutralizing antibody 28015 in a linear range of 0.24-6.49 ng/ml.

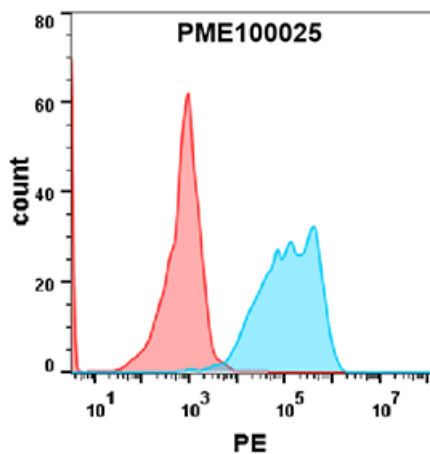


Figure 3. Flow cytometry analysis with 2 $\mu$ g/ml Human PD-1 Protein, mFc-His tag (11153) on Expi293 cells transfected with human PD-L1 (Blue histogram) or Expi293 transfected with irrelevant protein (Red histogram).

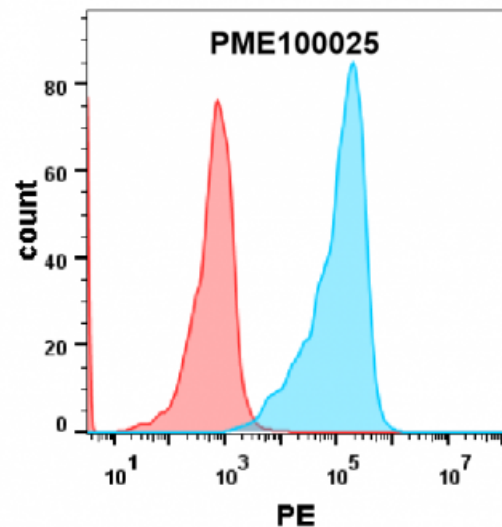


Figure 4. HEK293 cell line transfected with irrelevant protein (red histogram) and human PD-L2 protein (blue histogram) were surface stained with 2 $\mu$ g/ml Human PD-1 Protein, mFc-His tag (11153) followed by PE-conjugated Goat anti-mouse IgG secondary antibody.