

## HUMAN OPG (C-FC) PROTEIN

货号: 12044

产品全名: 人 OPG (C-Fc) 蛋白

规格: 10/50/100 µg

基因符号 Tumor necrosis factor receptor superfamily member

11B;Osteoclastogenesis inhibitory factor;Osteoprotegerin;TNFRSF11B;OCIF;OPG

目标蛋白: OPG

**UNIPROT ID:** O00300

**描述:** Recombinant Human Osteoprotegerin is produced by our Mammalian expression system and the target gene encoding Glu22–Leu201 is expressed with a Fc tag at the C-terminus.

**背景:** TNFRSF11B is a secreted protein, containing 2 death domains and 4 TNFR–Cys repeats. TNFRSF11B is a decoy receptor for the receptor activator of nuclear factor kappa B ligand (RANKL). By binding RANKL, TNFRSF11B inhibits nuclear kappa B (NF–κB) which is a central and rapid acting transcription factor for immune-related genes, and a key regulator of inflammation, innate immunity, and cell survival and differentiation. TNFRSF11B levels are influenced by voltage-dependent calcium channels Cav1.2. TNFRSF11B can reduce the production of osteoclasts by inhibiting the differentiation of osteoclast precursors into osteoclasts and also regulates the resorption of osteoclasts in vitro and in vivo. TNFRSF11B binding to RANKL on osteoblast/stromal cells, blocks the RANKL–RANK ligand interaction between osteoblast/stromal cells and osteoclast precursors. This has the effect of inhibiting the differentiation of the osteoclast precursor into a mature osteoclast.

物种/宿主: HEK293

分子量: 47.2 KDa

分子特征: Not available

纯化: Greater than 95% as determined by reducing SDS–PAGE.

**Formulation & Reconstitution:** Lyophilized from nanodisc solubilization buffer (20 mM Tris–HCl, 150 mM NaCl, pH 8.0). Normally 5% – 8% trehalose is added as protectants before lyophilization.

**储存和运输:** Store at –20°C to –80°C for 12 months in lyophilized form. After reconstitution, if not intended for use within a month, aliquot and store at –80°C (Avoid repeated freezing and thawing). Lyophilized proteins are shipped at ambient temperature.

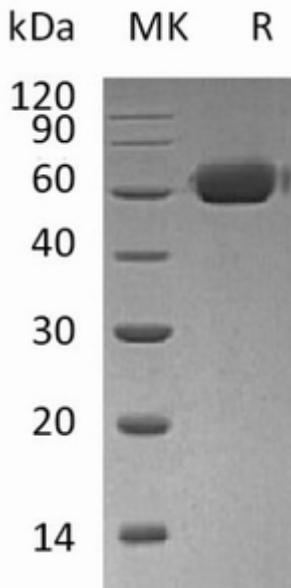


Figure 1. Greater than 95% as determined by reducing SDS-PAGE.