

HUMAN NCL PROTEIN, HIS TAG

货号: 11493

产品全名: 人 NCL 蛋白

规格: 10/50/100 µg

基因符号 C23;Nsr1

目标蛋白: NCL

UNIPROT ID: P19338

描述: Recombinant human NCL protein with N-terminal 6xHis tag

背景: Nucleolin (NCL), a eukaryotic nucleolar phosphoprotein, is involved in the synthesis and maturation of ribosomes. It is located mainly in dense fibrillar regions of the nucleolus. Human NCL gene consists of 14 exons with 13 introns and spans approximately 11kb. The intron 11 of the NCL gene encodes a small nucleolar RNA, termed U20. [provided by RefSeq, Jul 2008]

物种/宿主: HEK293

分子量: The protein has a predicted molecular mass of 77.3 kDa after removal of the signal peptide. The apparent molecular mass of His-NCL is approximately 100-130 kDa due to glycosylation.

分子特征: 6×His tag NCL(Val2-Glu710)

纯化: The purity of the protein is greater than 85% as determined by SDS-PAGE and Coomassie blue staining.

Formulation & Reconstitution: Lyophilized from nanodisc solubilization buffer (20 mM Tris-HCl, 150 mM NaCl, pH 8.0). Normally 5% – 8% trehalose is added as protectants before lyophilization.

储存和运输: Store at -20°C to -80°C for 12 months in lyophilized form. After reconstitution, if not intended for use within a month, aliquot and store at -80°C (Avoid repeated freezing and thawing). Lyophilized proteins are shipped at ambient temperature.

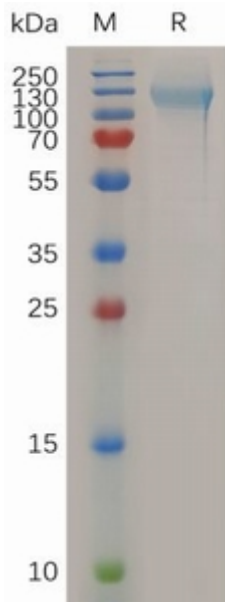


Figure 1. Human NCL Protein, His Tag on SDS-PAGE under reducing condition.