

HUMAN MESOTHELIN (296-580) PROTEIN, MFC-HIS TAG

货号: 11159

产品全名: 人 Mesothelin (296-580) 蛋白

规格: 10/50/100 μ g

基因符号 MSLN;Mesothelin;MPF

目标蛋白: Mesothelin

UNIPROT ID: Q13421

描述: Recombinant human Mesothelin(296-580) protein with C-terminal mouse Fc and 6xHis tag

背景: This gene encodes a preproprotein that is proteolytically processed to generate two protein products, megakaryocyte potentiating factor and mesothelin. Megakaryocyte potentiating factor functions as a cytokine that can stimulate colony formation of bone marrow megakaryocytes. Mesothelin is a glycosylphosphatidylinositol-anchored cell-surface protein that may function as a cell adhesion protein. This protein is overexpressed in epithelial mesotheliomas, ovarian cancers and in specific squamous cell carcinomas. Alternative splicing results in multiple transcript variants, at least one of which encodes an isoform that is proteolytically processed.

物种/宿主: HEK293

分子量: The protein has a predicted molecular mass of 59.3 kDa after removal of the signal peptide.

分子特征: Mesothelin(Glu296-Gly580) mFc(Pro99-Lys330) 6xHis tag

纯化: The purity of the protein is greater than 95% as determined by SDS-PAGE and Coomassie blue staining.

Formulation & Reconstitution: Lyophilized from nanodisc solubilization buffer (20 mM Tris-HCl, 150 mM NaCl, pH 8.0). Normally 5% - 8% trehalose is added as protectants before lyophilization.

储存和运输: Store at -20°C to -80°C for 12 months in lyophilized form. After reconstitution, if not intended for use within a month, aliquot and store at -80°C (Avoid repeated freezing and thawing). Lyophilized proteins are shipped at ambient temperature.

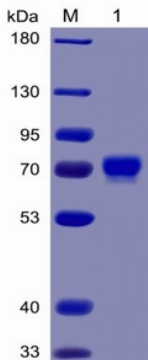


Figure 1. Human Mesothelin (296-580) Protein, mFc-His Tag on SDS-PAGE under reducing condition.

Human MSLN(296-580), mFc-His Tagged protein ELISA

0.2 μ g of MSLN(296-580), mFc-His Tagged protein per well

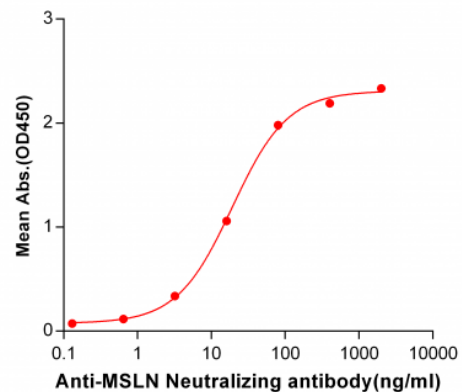


Figure 2. ELISA plate pre-coated by 2 μ g/ml (100 μ l/well) Human Mesothelin, mFc-His tagged protein (11159) can bind Anti-Mesothelin Neutralizing antibody 28030 in a linear range of 3.2-80.0 ng/ml.