

HUMAN M-CSF PROTEIN, HIS TAG

货号: 11369

产品全名: 人 M-CSF 蛋白

规格: 10/50/100 µg

基因符号 CSF-1;MCSF

目标蛋白: M-CSF

UNIPROT ID: P09603

描述: Recombinant Human M-CSF with C-terminal 6xHis tag

背景: The protein encoded by this gene is a cytokine that controls the production, differentiation, and function of macrophages. The active form of the protein is found extracellularly as a disulfide-linked homodimer, and is thought to be produced by proteolytic cleavage of membrane-bound precursors. The encoded protein may be involved in development of the placenta. Alternate splicing results in multiple transcript variants. [provided by RefSeq, Sep 2011]

物种/宿主: HEK293

分子量: The protein has a predicted molecular mass of 26 kDa after removal of the signal peptide. The apparent molecular mass of M-CSF-His is approximately 25-55 kDa due to glycosylation.

分子特征: M-CSF(Glu33-Arg255) 6×His tag

纯化: The purity of the protein is greater than 95% as determined by SDS-PAGE and Coomassie blue staining.

Formulation & Reconstitution: Lyophilized from nanodisc solubilization buffer (20 mM Tris-HCl, 150 mM NaCl, pH 8.0). Normally 5% – 8% trehalose is added as protectants before lyophilization.

储存和运输: Store at -20°C to -80°C for 12 months in lyophilized form. After reconstitution, if not intended for use within a month, aliquot and store at -80°C (Avoid repeated freezing and thawing). Lyophilized proteins are shipped at ambient temperature.

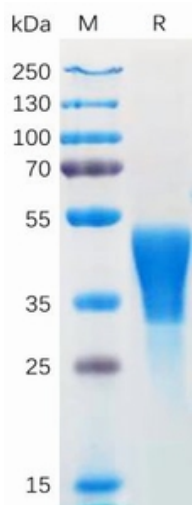


Figure 1. Human M-CSF Protein, His Tag on SDS-PAGE under reducing condition.

Human M-CSF, His Tagged protein ELISA
0.2 μ g of Human M-CSF, His tagged protein per well

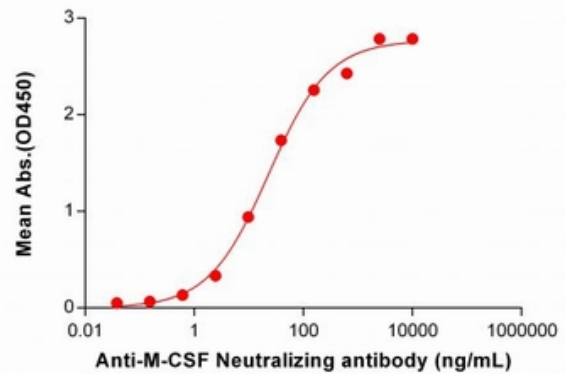


Figure 2. ELISA plate pre-coated by 2 μ g/ml (100 μ l/well) Human M-CSF Protein, His Tag (11369) can bind Anti-M-CSF Neutralizing antibody 28104 in a linear range of 2.44-156.25 ng/mL.

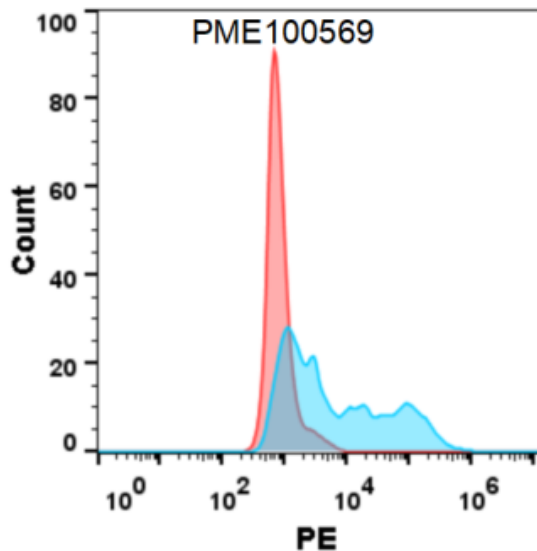


Figure 3. Flow cytometry analysis with 1 μ g/ml Human M-CSF Protein, His tag (11369) on Expi293 cells transfected with human CSF1R (Blue histogram) or Expi293 transfected with irrelevant protein (Red histogram).