

## HUMAN LIPG PROTEIN, HIS TAG

货号: 11521

产品全名: 人 LIPG 蛋白

规格: 10/50/100 µg

基因符号 Endothelial lipase;DL;L;phospholipase A1

目标蛋白: LIPG

**UNIPROT ID:** Q9Y5X9

**描述:** Recombinant human LIPG protein with C-terminal 6xHis tag

**背景:** The protein encoded by this gene has substantial phospholipase activity and may be involved in lipoprotein metabolism and vascular biology. This protein is designated a member of the TG lipase family by its sequence and characteristic lid region which provides substrate specificity for enzymes of the TG lipase family. [provided by RefSeq, Jul 2008]

**物种/宿主:** HEK293

**分子量:** The protein has a predicted molecular mass of 55.4 kDa after removal of the signal peptide. The apparent molecular mass of LIPG-His is approximately 55-70 kDa due to glycosylation.

**分子特征:** LIPG(Ser21-Pro500) 6xHis tag

**纯化:** The purity of the protein is greater than 80% as determined by SDS-PAGE and Coomassie blue staining.

**Formulation & Reconstitution:** Lyophilized from nanodisc solubilization buffer (20 mM Tris-HCl, 150 mM NaCl, pH 8.0). Normally 5% - 8% trehalose is added as protectants before lyophilization.

**储存和运输:** Store at -20°C to -80°C for 12 months in lyophilized form. After reconstitution, if not intended for use within a month, aliquot and store at -80°C (Avoid repeated freezing and thawing). Lyophilized proteins are shipped at ambient temperature.

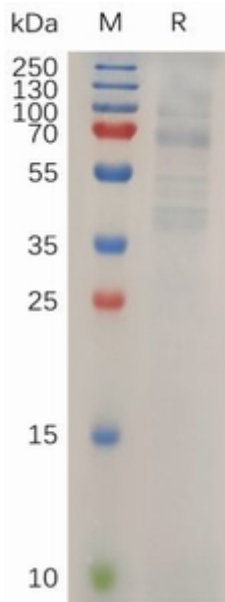


Figure 1. Human LIPG Protein, His Tag on SDS-PAGE under reducing condition.