

## HUMAN LILRB2 PROTEIN, HIS TAG

货号: 11533

产品全名: 人 LILRB2 蛋白

规格: 10/50/100 µg

基因符号 LIR-2;ILT-4;MIR-10;CD85d

目标蛋白: LILRB2

**UNIPROT ID:** Q8N423

**描述:** Recombinant human LILRB2 protein with C-terminal 6xHis tag

**背景:** This gene is a member of the leukocyte immunoglobulin-like receptor (LIR) family, which is found in a gene cluster at chromosomal region 19q13.4. The encoded protein belongs to the subfamily B class of LIR receptors which contain two or four extracellular immunoglobulin domains, a transmembrane domain, and two to four cytoplasmic immunoreceptor tyrosine-based inhibitory motifs (ITIMs). The receptor is expressed on immune cells where it binds to MHC class I molecules on antigen-presenting cells and transduces a negative signal that inhibits stimulation of an immune response. It is thought to control inflammatory responses and cytotoxicity to help focus the immune response and limit autoreactivity. Multiple transcript variants encoding different isoforms have been found for this gene. [provided by RefSeq, Jul 2008]

**物种/宿主:** HEK293

**分子量:** The protein has a predicted molecular mass of 48.6 kDa after removal of the signal peptide. The apparent molecular mass of LILRB2-His is approximately 55-70kDa due to glycosylation.

**分子特征:** LILRB2(Gln22-Val461) 6×His tag

**纯化:** The purity of the protein is greater than 85% as determined by SDS-PAGE and Coomassie blue staining.

**Formulation & Reconstitution:** Lyophilized from nanodisc solubilization buffer (20 mM Tris-HCl, 150 mM NaCl, pH 8.0). Normally 5% – 8% trehalose is added as protectants before lyophilization.

**储存和运输:** Store at -20°C to -80°C for 12 months in lyophilized form. After reconstitution, if not intended for use within a month, aliquot and store at -80°C (Avoid repeated freezing and thawing). Lyophilized proteins are shipped at ambient temperature.

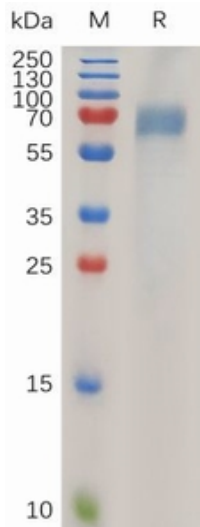


Figure 1. Human LILRB2 Protein, His Tag on SDS-PAGE under reducing condition.

**Human LILRB2, His Tagged protein ELISA**  
0.2 µg of Human LILRB2, His tagged protein per well

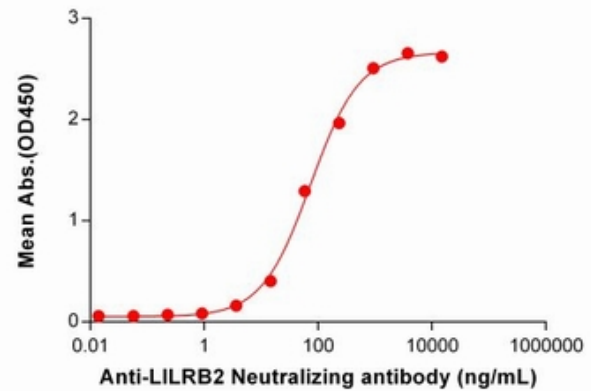


Figure 2. ELISA plate pre-coated by 2 µg/ml (100 µl/well) Human LILRB2 Protein, His Tag (11533) can bind Anti-LILRB2 Neutralizing antibody 28137 in a linear range of 3.66–937.50 ng/mL.