

HUMAN KRAS PROTEIN, MFC TAG

货号: 11261

产品全名: 人 KRAS 蛋白

规格: 10/50/100 μ g

基因符号 C-K-RAS;c-Ki-ras2;CFC2;K-Ras;K-RAS2A;K-RAS2B;K-RAS4A;K-RAS4B;KI-RAS;KRAS1;KRAS2;NS;NS3;RALD;RASK2

目标蛋白: KRAS

UNIPROT ID: P01116

描述: Recombinant human KRAS protein with C-terminal mouse Fc tag

背景: This gene, a Kirsten ras oncogene homolog from the mammalian ras gene family, encodes a protein that is a member of the small GTPase superfamily. A single amino acid substitution is responsible for an activating mutation. The transforming protein that results is implicated in various malignancies, including lung adenocarcinoma, mucinous adenoma, ductal carcinoma of the pancreas and colorectal carcinoma. Alternative splicing leads to variants encoding two isoforms that differ in the C-terminal region. [provided by RefSeq, Jul 2008]

物种/宿主: HEK293

分子量: The protein has a predicted molecular mass of 47.1 kDa after removal of the signal peptide. The apparent molecular mass of KRAS-mFc is approximately 35-55 kDa due to glycosylation.

分子特征: KRAS(Thr2-Cys185) mFc(Pro99-Lys330)

纯化: The purity of the protein is greater than 95% as determined by SDS-PAGE and Coomassie blue staining.

Formulation & Reconstitution: Lyophilized from nanodisc solubilization buffer (20 mM Tris-HCl, 150 mM NaCl, pH 8.0). Normally 5% - 8% trehalose is added as protectants before lyophilization.

储存和运输: Store at -20°C to -80°C for 12 months in lyophilized form. After reconstitution, if not intended for use within a month, aliquot and store at -80°C (Avoid repeated freezing and thawing). Lyophilized proteins are shipped at ambient temperature.

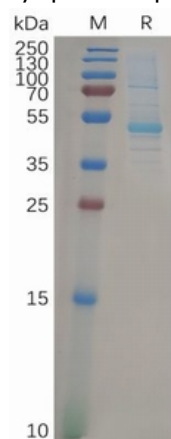


Figure 1. Human KRAS Protein, mFc Tag on SDS-PAGE under reducing condition.