

HUMAN KLRG1 PROTEIN, hFc TAG

货号: 11260

产品全名: 人 KLRG1 蛋白

规格: 10/50/100 µg

基因符号 CLEC15A;MAFA;MAFAL

目标蛋白: KLRG1

UNIPROT ID: Q96E93

描述: Recombinant Human KLRG1 protein with N-terminal human Fc

背景: Natural killer (NK) cells are lymphocytes that can mediate lysis of certain tumor cells and virus-infected cells without previous activation. They can also regulate specific humoral and cell-mediated immunity. The protein encoded by this gene belongs to the killer cell lectin-like receptor (KLR) family, which is a group of transmembrane proteins preferentially expressed in NK cells. Studies in mice suggested that the expression of this gene may be regulated by MHC class I molecules.

物种/宿主: HEK293

分子量: The protein has a predicted molecular mass of 41.6 kDa after removal of the signal peptide. The apparent molecular mass of hFc-KLRG1 is approximately 55-70 kDa due to glycosylation.

分子特征: hFc(Glu99-Ala330) KLRG1 (Ileu60-Phe195)

纯化: The purity of the protein is greater than 90% as determined by SDS-PAGE and Coomassie blue staining.

Formulation & Reconstitution: Lyophilized from nanodisc solubilization buffer (20 mM Tris-HCl, 150 mM NaCl, pH 8.0). Normally 5% - 8% trehalose is added as protectants before lyophilization.

储存和运输: Store at -20°C to -80°C for 12 months in lyophilized form. After reconstitution, if not intended for use within a month, aliquot and store at -80°C (Avoid repeated freezing and thawing). Lyophilized proteins are shipped at ambient temperature.

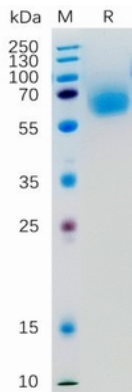


Figure 1. Human KLRG1 Protein, hFc Tag on SDS-PAGE under reducing condition.

Human KLRG1, hFc Tagged protein ELISA

0.2 µg of Human KLRG1, hFc tagged protein per well

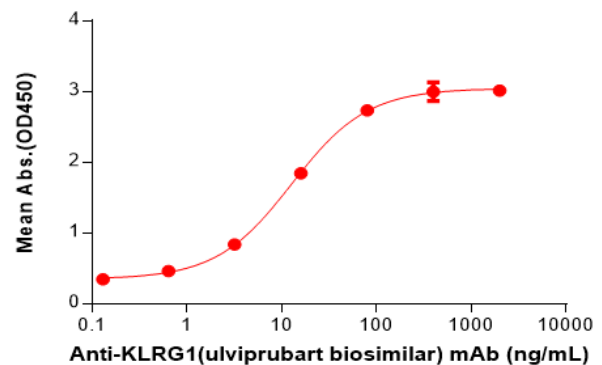


Figure 2. ELISA plate pre-coated by 2 µg/ml (100 µl/well) Human KLRG1 Protein, hFc Tag(11260) can bind Anti-KLRG1(ulviprubart biosimilar) mAb(28153) in a linear range of 3.20-80 ng/mL.