

HUMAN KIR3DL3 PROTEIN

货号: 12262

产品全名: 人 KIR3DL3 蛋白

规格: 10/50/100 µg

基因符号 KIR44;KIRC1;CD158Z;KIR3DL7;KIR2DL5B

目标蛋白: KIR3DL3

UNIPROT ID: Q8N743

描述: Recombinant human KIR3DL3 Protein with C-terminal 6xHis tag

背景: Killer cell immunoglobulin-like receptors (KIRs) are transmembrane glycoproteins expressed by natural killer cells and subsets of T cells. The KIR genes are polymorphic and highly homologous and they are found in a cluster on chromosome 19q13.4 within the 1 Mb leukocyte receptor complex (LRC). The gene content of the KIR gene cluster varies among haplotypes, although several "framework" genes are found in all haplotypes (KIR3DL3, KIR3DP1, KIR3DL4, KIR3DL2). The KIR proteins are classified by the number of extracellular immunoglobulin domains (2D or 3D) and by whether they have a long (L) or short (S) cytoplasmic domain. KIR proteins with the long cytoplasmic domain transduce inhibitory signals upon ligand binding via an immune tyrosine-based inhibitory motif (ITIM), while KIR proteins with the short cytoplasmic domain lack the ITIM motif and instead associate with the TYRO protein tyrosine kinase binding protein to transduce activating signals. The ligands for several KIR proteins are subsets of HLA class I molecules; thus, KIR proteins are thought to play an important role in regulation of the immune response. This gene is one of the "framework" loci that is present on all haplotypes. [provided by RefSeq, Jul 2008]

物种/宿主: HEK293

分子量: The protein has a predicted molecular mass of 33.1 kDa after removal of the signal peptide. The apparent molecular mass of KIR3DL3-His is approximately 35–55 kDa due to glycosylation.

分子特征: KIR3DL3(Gln26–Leu322) 6×His tag

纯化: The purity of the protein is greater than 85% as determined by SDS-PAGE and Coomassie blue staining.

Formulation & Reconstitution: Lyophilized from nanodisc solubilization buffer (20 mM Tris-HCl, 150 mM NaCl, pH 8.0). Normally 5% – 8% trehalose is added as protectants before lyophilization.

储存和运输: Store at -20°C to -80°C for 12 months in lyophilized form. After reconstitution, if not intended for use within a month, aliquot and store at -80°C (Avoid repeated freezing and thawing). Lyophilized proteins are shipped at ambient temperature.

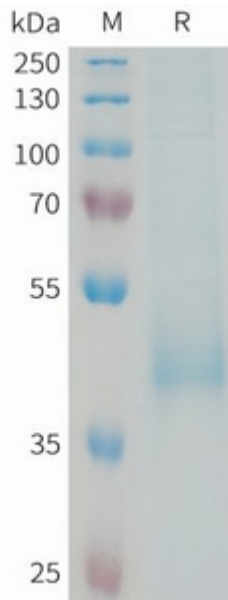


Figure 1. Human KIR3DL3 Protein, His Tag on SDS-PAGE under reducing condition.