

HUMAN IL2 PROTEIN, MFC TAG

货号: 11373

产品全名: 人 IL2 蛋白

规格: 10/50/100 µg

基因符号 IL-2;lymphokine;TCGF

目标蛋白: IL2

UNIPROT ID: P60568

描述: Recombinant Human IL2 with C-terminal mouse Fc tag

背景: This gene is a member of the interleukin 2 (IL2) cytokine subfamily which includes IL4, IL7, IL9, IL15, IL21, erythropoietin, and thrombopoietin. The protein encoded by this gene is a secreted cytokine produced by activated CD4 and CD8 T lymphocytes, that is important for the proliferation of T and B lymphocytes. The receptor of this cytokine (IL2R) is a heterotrimeric protein complex whose gamma chain is also shared by IL4 and IL7. The expression of this gene in mature thymocytes is monoallelic, which represents an unusual regulatory mode for controlling the precise expression of a single gene. The targeted disruption of a similar gene in mice leads to ulcerative colitis-like disease, which suggests an essential role of this gene in the immune response to antigenic stimuli. [provided by RefSeq, Sep 2020]

物种/宿主: HEK293

分子量: The protein has a predicted molecular mass of 41.5 kDa after removal of the signal peptide. The apparent molecular mass of IL2-mFc is approximately 35-55 kDa due to glycosylation.

分子特征: IL2(Ala21-Thr153) mFc(Pro99-Lys330)

纯化: The purity of the protein is greater than 95% as determined by SDS-PAGE and Coomassie blue staining.

Formulation & Reconstitution: Lyophilized from nanodisc solubilization buffer (20 mM Tris-HCl, 150 mM NaCl, pH 8.0). Normally 5% – 8% trehalose is added as protectants before lyophilization.

储存和运输: Store at -20°C to -80°C for 12 months in lyophilized form. After reconstitution, if not intended for use within a month, aliquot and store at -80°C (Avoid repeated freezing and thawing). Lyophilized proteins are shipped at ambient temperature.

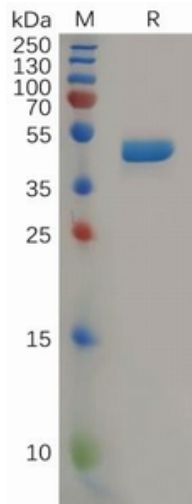


Figure 1. Human IL2 Protein, mFc Tag on SDS-PAGE under reducing condition.

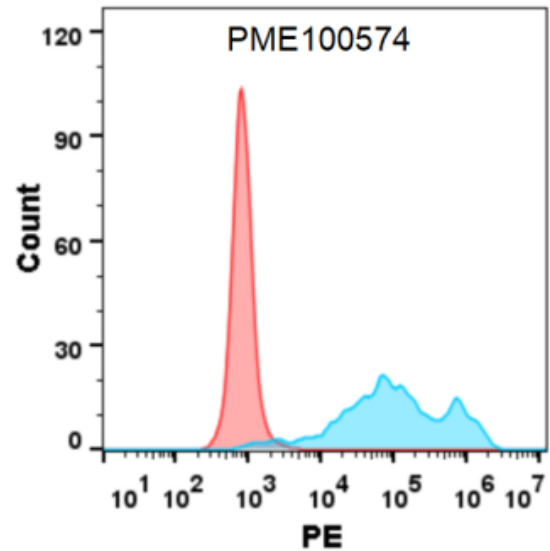


Figure 2. Flow cytometry analysis with 1 $\mu\text{g}/\text{ml}$ Human IL2 Protein, mFc tag (11373) on Expi293 cells transfected with human IL2RB (Blue histogram) or Expi293 transfected with irrelevant protein (Red histogram).