

## HUMAN IGFBP7 PROTEIN, HIS TAG

货号: 11477

产品全名: 人 IGFBP7 蛋白

规格: 10/50/100 µg

基因符

号 AGM;FSTL2;IBP-7;IGFBP-7;IGFBP-7v;IGFBPRP1;MAC25;PSF;RAMSVPS;TAF

目标蛋白: IGFBP7

**UNIPROT ID:** Q16270

**描述:** Recombinant human IGFBP7 protein with N-terminal 6xHis tag

**背景:** This gene encodes a member of the insulin-like growth factor (IGF)-binding protein (IGFBP) family. IGFBPs bind IGFs with high affinity, and regulate IGF availability in body fluids and tissues and modulate IGF binding to its receptors. This protein binds IGF-I and IGF-II with relatively low affinity, and belongs to a subfamily of low-affinity IGFBPs. It also stimulates prostacyclin production and cell adhesion. Alternatively spliced transcript variants encoding different isoforms have been described for this gene, and one variant has been associated with retinal arterial macroaneurysm (PMID:21835307). [provided by RefSeq, Dec 2011]

**物种/宿主:** HEK293

**分子量:** The protein has a predicted molecular mass of 27.0 kDa after removal of the signal peptide. The apparent molecular mass of His-IGFBP7 is approximately 35-40 kDa due to glycosylation.

**分子特征:** 6×His tag IGFBP7(Asp30-Leu282)

**纯化:** The purity of the protein is greater than 85% as determined by SDS-PAGE and Coomassie blue staining.

**Formulation & Reconstitution:** Lyophilized from nanodisc solubilization buffer (20 mM Tris-HCl, 150 mM NaCl, pH 8.0). Normally 5% – 8% trehalose is added as protectants before lyophilization.

**储存和运输:** Store at -20°C to -80°C for 12 months in lyophilized form. After reconstitution, if not intended for use within a month, aliquot and store at -80°C (Avoid repeated freezing and thawing). Lyophilized proteins are shipped at ambient temperature.

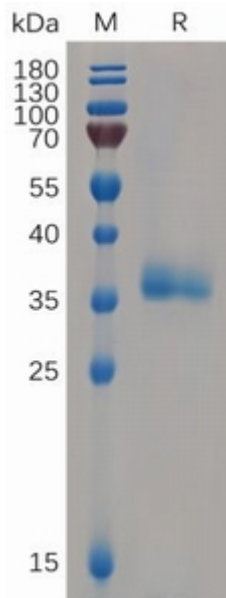


Figure 1. Human IGFBP7 Protein, His Tag on SDS-PAGE under reducing condition.

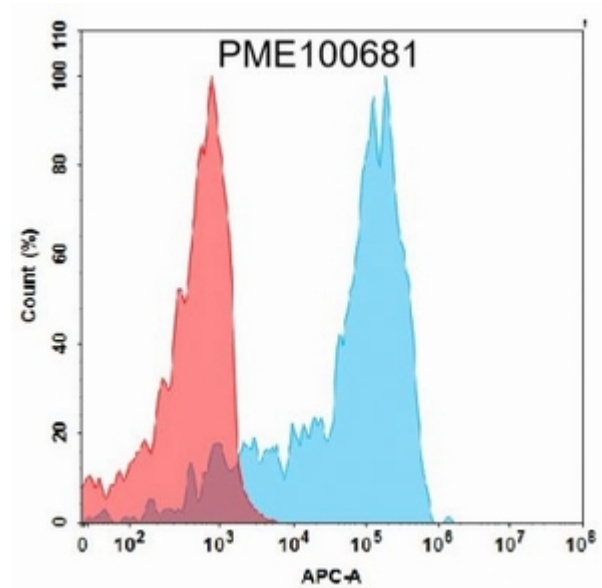


Figure 2. Flow cytometry analysis with 15  $\mu\text{g/ml}$  Human IGFBP7 Protein, His Tag (11477) on Expi293 cells transfected with Human CD93 protein (Blue histogram) or Expi293 transfected with irrelevant protein (Red histogram).