

## HUMAN HVEM PROTEIN, HIS TAG

货号: 11253

产品全名: 人 HVEM 蛋白

规格: 10/50/100 µg

基因符号: ATAR;CD270;HVEA;HVEM;LIGHTR;TR2

目标蛋白: HVEM

**UNIPROT ID:** Q92956

**描述:** Recombinant Human HVEM Protein with C-terminal 6xHis tag

**背景:** This gene encodes a member of the TNF (tumor necrosis factor) receptor superfamily. The encoded protein functions in signal transduction pathways that activate inflammatory and inhibitory T-cell immune response. It binds herpes simplex virus (HSV) viral envelope glycoprotein D (gD), mediating its entry into cells. Alternative splicing results in multiple transcript variants.

**物种/宿主:** HEK293

**分子量:** The protein has a predicted molecular mass of 18.2 kDa after removal of the signal peptide. The apparent molecular mass of HVEM-His is approximately 25–55 kDa due to glycosylation.

**分子特征:** HVEM(Leu39-Val202) 6×His tag

**纯化:** The purity of the protein is greater than 95% as determined by SDS-PAGE and Coomassie blue staining.

**Formulation & Reconstitution:** Lyophilized from nanodisc solubilization buffer (20 mM Tris-HCl, 150 mM NaCl, pH 8.0). Normally 5% – 8% trehalose is added as protectants before lyophilization.

**储存和运输:** Store at -20°C to -80°C for 12 months in lyophilized form. After reconstitution, if not intended for use within a month, aliquot and store at -80°C (Avoid repeated freezing and thawing). Lyophilized proteins are shipped at ambient temperature.

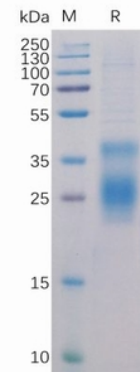


Figure 1. Human HVEM Protein, His Tag on SDS-PAGE under reducing condition.

### Human HVEM, His Tagged protein ELISA

0.2 µg of HVEM, His Tagged protein per well

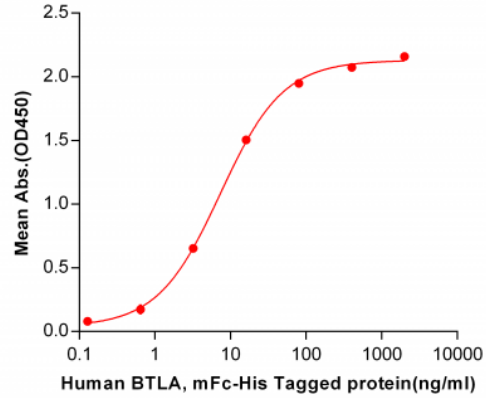


Figure 2. ELISA plate pre-coated by 2 µg/ml (100 µl/well) Human HVEM, His tagged protein (11253) can bind Human BTLA, mFc-His tagged protein 11174 in a linear range of 0.64-80 ng/ml.

### Human HVEM, His Tagged protein ELISA

0.2 µg of HVEM, His Tagged protein per well

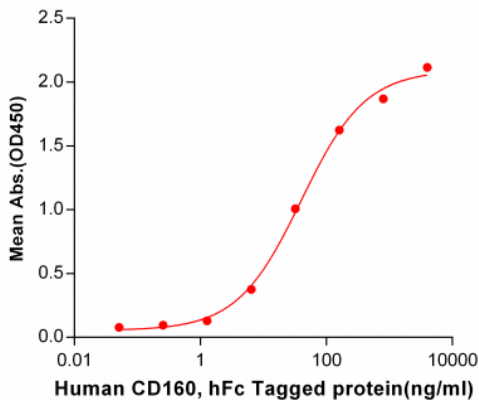


Figure 3. ELISA plate pre-coated by 2 µg/ml (100 µl/well) Human HVEM, His tagged protein (11253) can bind Human CD160, hFc tagged protein 11179 in a linear range of 1.28-160 ng/ml.

### Human HVEM, His Tagged protein ELISA

0.2 µg of Human HVEM, His Tagged protein per well

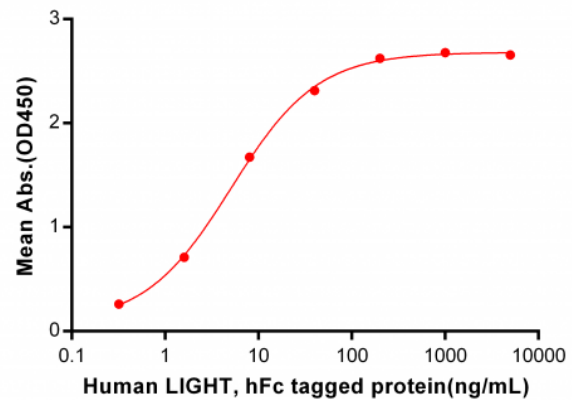


Figure 4. ELISA plate pre-coated by 2 µg/ml (100 µl/well) Human HVEM, His tagged protein (11253) can bind Human LIGHT, hFc tagged protein 11175 in a linear range of 0.32-40 ng/ml.

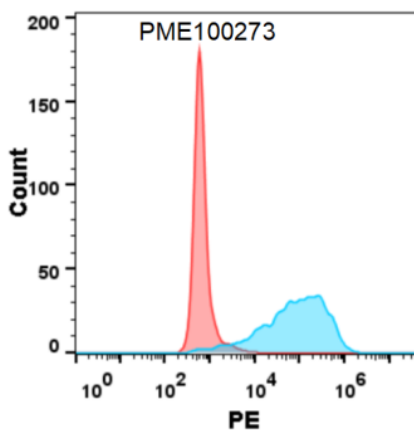


Figure 6. Flow cytometry analysis with 15 µg/ml Human HVEM Protein, His tag (11253) on Expi293 cells transfected with human LIGHT (Blue histogram) or Expi293 transfected with irrelevant protein (Red histogram).

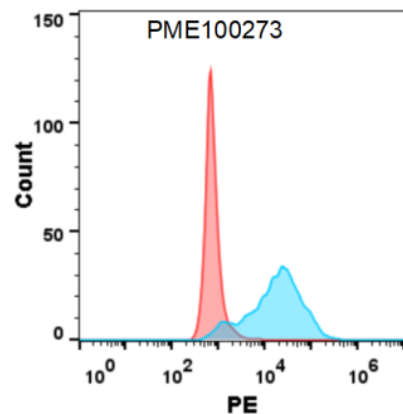


Figure 6. Flow cytometry analysis with 15 µg/ml Human HVEM Protein, His tag (11253) on Expi293 cells transfected with human LIGHT (Blue histogram) or Expi293 transfected with irrelevant protein (Red histogram).



# Product Description

Pioneering GTPase and Oncogene Product Development since 2010

---