

HUMAN GPC3 PROTEIN, HFC TAG

货号: 11230

产品全名: 人 GPC3 蛋白

规格: 10/50/100 µg

基因符号 DGSX;GTR2-2;MXR7;OCI-5;SDYS;SGB;SGBS;SGBS1

目标蛋白: GPC3

UNIPROT ID: P51654

描述: Recombinant Human GPC3 Protein with N-terminal Human Fc tag

背景: Cell surface heparan sulfate proteoglycans are composed of a membrane-associated protein core substituted with a variable number of heparan sulfate chains. Members of the glypican-related integral membrane proteoglycan family (GRIPS) contain a core protein anchored to the cytoplasmic membrane via a glycosyl phosphatidylinositol linkage. These proteins may play a role in the control of cell division and growth regulation. The protein encoded by this gene can bind to and inhibit the dipeptidyl peptidase activity of CD26, and it can induce apoptosis in certain cell types. Deletion mutations in this gene are associated with Simpson-Golabi-Behmel syndrome, also known as Simpson dysmorphia syndrome. Alternative splicing results in multiple transcript variants. [provided by RefSeq, Sep 2009] References Fu Ying,Urban Daniel J,Nani Roger R et al. Glypican-3-Specific Antibody Drug Conjugates Targeting Hepatocellular Carcinoma.[J].Hepatology, 2019, 70: 563-576. Zhang Yi-Fan,Ho Mitchell,Humanization of high-affinity antibodies targeting glypican-3 in hepatocellular carcinoma.[J].Sci Rep, 2016, 6: 33878.

物种/宿主: HEK293

分子量: The protein has a predicted molecular mass of 43.3 kDa after removal of the signal peptide.

分子特征: hFc(Glu99-Ala330) GPC3(Asp511-Ser560)

纯化: The purity of the protein is greater than 95% as determined by SDS-PAGE and Coomassie blue staining.

Formulation & Reconstitution: Lyophilized from nanodisc solubilization buffer (20 mM Tris-HCl, 150 mM NaCl, pH 8.0). Normally 5% – 8% trehalose is added as protectants before lyophilization.

储存和运输: Store at -20°C to -80°C for 12 months in lyophilized form. After reconstitution, if not intended for use within a month, aliquot and store at -80°C (Avoid repeated freezing and thawing). Lyophilized proteins are shipped at ambient temperature.

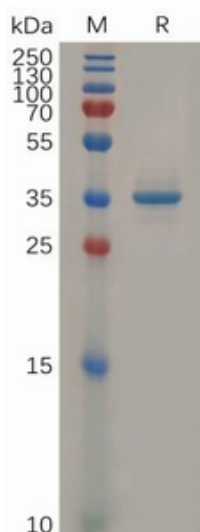


Figure 1. Human GPC3 Protein, hFc Tag on SDS-PAGE under reducing condition.

Human GPC3, hFc tagged protein ELISA
0.1 µg of Human GPC3, hFc tagged protein per well

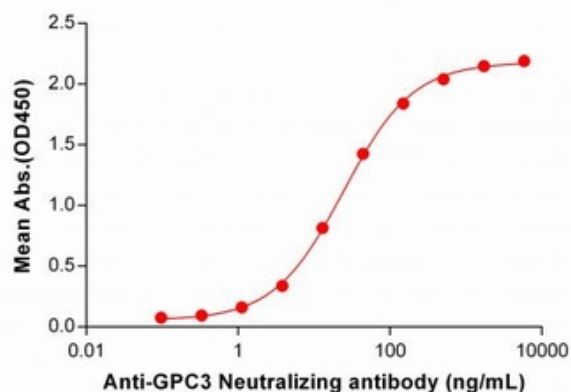


Figure 2. ELISA plate pre-coated by 1 µg/ml (100 µl/well) Human GPC3 Protein, hFc Tag (11230) can bind Anti-GPC3 Neutralizing antibody 28086 in a linear range of 1.12–508.85 ng/mL.

Human GPC3, hFc tagged protein ELISA
0.2 µg of Human GPC3, hFc tagged protein per well

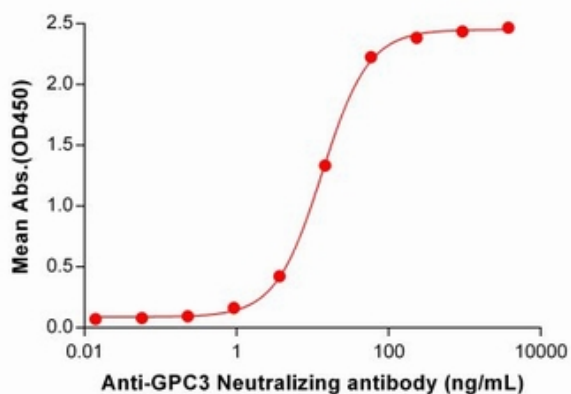


Figure 3. ELISA plate pre-coated by 2 µg/ml (100 µl/well) Human GPC3 Protein, hFc Tag (11230) can bind Anti-GPC3 Neutralizing antibody 28139 in a linear range of 0.92–58.59 ng/mL.