

## HUMAN GPC1 PROTEIN, HIS TAG

货号: 11751

产品全名: 人 GPC1 蛋白

规格: 10/50/100 µg

基因符号 Glypican 1;PC1

目标蛋白: GPC1

**UNIPROT ID:** P35052

**描述:** Recombinant human GPC1 protein with C-terminal 7xHis tag

**背景:** Cell surface heparan sulfate proteoglycans are composed of a membrane-associated protein core substituted with a variable number of heparan sulfate chains. Members of the glypican-related integral membrane proteoglycan family (GRIPS) contain a core protein anchored to the cytoplasmic membrane via a glycosyl phosphatidylinositol linkage. These proteins may play a role in the control of cell division and growth regulation. [provided by RefSeq, Jul 2008]

**物种/宿主:** HEK293

**分子量:** The protein has a predicted molecular mass of 57.0 kDa after removal of the signal peptide. The apparent molecular mass of GPC1-His is approximately 55-70 kDa due to glycosylation.

**分子特征:** GPC1(Asp24-Ser530) 7×His tag

**纯化:** The purity of the protein is greater than 85% as determined by SDS-PAGE and Coomassie blue staining.

**Formulation & Reconstitution:** Lyophilized from nanodisc solubilization buffer (20 mM Tris-HCl, 150 mM NaCl, pH 8.0). Normally 5% – 8% trehalose is added as protectants before lyophilization.

**储存和运输:** Store at -20°C to -80°C for 12 months in lyophilized form. After reconstitution, if not intended for use within a month, aliquot and store at -80°C (Avoid repeated freezing and thawing). Lyophilized proteins are shipped at ambient temperature.

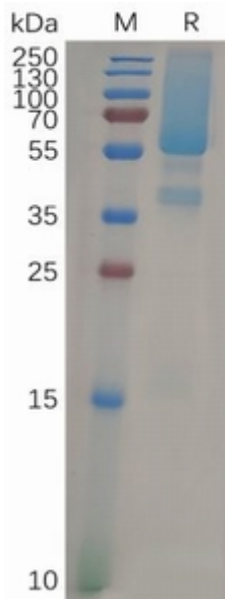


Figure 1. Human GPC1 Protein, His Tag on SDS-PAGE under reducing condition.