

HUMAN GM-CSFR PROTEIN, HFC TAG

货号: 11676

产品全名: 人 GM-CSFR 蛋白

规格: 10/50/100 µg

基因符号 alphaGMR;CD116;CDw116;CSF2R;CSF2RAX;CSF2RAY;CSF2RX;CSF2RY;GM-CSF-R-alpha;GMCSFR;GMCSFR-alpha;GMR;GMR-alpha;SMDP4

目标蛋白: GM-CSFR

UNIPROT ID: P15509

描述: Recombinant Human GM-CSFR Protein with C-terminal human Fc tag

背景: The protein encoded by this gene is the alpha subunit of the heterodimeric receptor for colony stimulating factor 2, a cytokine which controls the production, differentiation, and function of granulocytes and macrophages. The encoded protein is a member of the cytokine family of receptors. This gene is found in the pseudoautosomal region (PAR) of the X and Y chromosomes. Multiple transcript variants encoding different isoforms have been found for this gene, with some of the isoforms being membrane-bound and others being soluble. [provided by RefSeq, Jul 2008]

物种/宿主: HEK293

分子量: The protein has a predicted molecular mass of 60.6 kDa after removal of the signal peptide. The apparent molecular mass of GM-CSFR-hFc is approximately 70-130 kDa due to glycosylation.

分子特征: GM-CSFR(Glu23-Gly320) hFc(Glu99-Ala330)

纯化: The purity of the protein is greater than 95% as determined by SDS-PAGE and Coomassie blue staining.

Formulation & Reconstitution: Lyophilized from nanodisc solubilization buffer (20 mM Tris-HCl, 150 mM NaCl, pH 8.0). Normally 5% - 8% trehalose is added as protectants before lyophilization.

储存和运输: Store at -20°C to -80°C for 12 months in lyophilized form. After reconstitution, if not intended for use within a month, aliquot and store at -80°C (Avoid repeated freezing and thawing). Lyophilized proteins are shipped at ambient temperature.

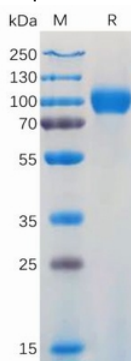


Figure 1. Human GM-CSFR Protein, hFc Tag on SDS-PAGE under reducing condition.