

HUMAN FOLR2 PROTEIN, HIS TAG

货号: 11451

产品全名: 人 FOLR2 蛋白

规格: 10/50/100 µg

基因符号 BETA-HFR;FBP;FBP/PL-1;FOLR1;FR-BETA;FR-P3;FRbeta

目标蛋白: FOLR2

UNIPROT ID: P14207

描述: Recombinant human FOLR2 protein with C-terminal 6xHis tag

背景: The protein encoded by this gene is a member of the folate receptor (FOLR) family, and these genes exist in a cluster on chromosome 11. Members of this gene family have a high affinity for folic acid and for several reduced folic acid derivatives, and they mediate delivery of 5-methyltetrahydrofolate to the interior of cells. This protein has a 68% and 79% sequence homology with the FOLR1 and FOLR3 proteins, respectively. Although this protein was originally thought to be specific to placenta, it can also exist in other tissues, and it may play a role in the transport of methotrexate in synovial macrophages in rheumatoid arthritis patients. Multiple transcript variants that encode the same protein have been found for this gene. [provided by RefSeq, Jul 2008]

物种/宿主: HEK293

分子量: The protein has a predicted molecular mass of 25.4 kDa after removal of the signal peptide. The apparent molecular mass of FOLR2-His is approximately 25-35 kDa due to glycosylation.

分子特征: FOLR2(Thr17-His228) 6×His tag

纯化: The purity of the protein is greater than 85% as determined by SDS-PAGE and Coomassie blue staining.

Formulation & Reconstitution: Lyophilized from nanodisc solubilization buffer (20 mM Tris-HCl, 150 mM NaCl, pH 8.0). Normally 5% – 8% trehalose is added as protectants before lyophilization.

储存和运输: Store at -20°C to -80°C for 12 months in lyophilized form. After reconstitution, if not intended for use within a month, aliquot and store at -80°C (Avoid repeated freezing and thawing). Lyophilized proteins are shipped at ambient temperature.

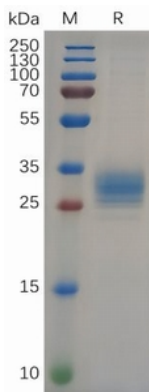


Figure 1. Human FOLR2 Protein, His Tag on SDS-PAGE under reducing condition.

Human FOLR2,His Tagged protein ELISA

0.4 µg of HumanFOLR2, His tagged protein per well

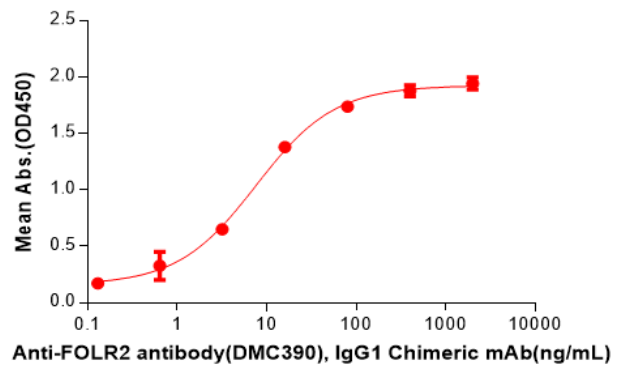


Figure 2. ELISA plate pre-coated by 4 µg/ml (100 µl/well) Human FOLR2 Protein, His Tag(11451) can bind Anti-FOLR2 antibody(DMC390), IgG1 Chimeric mAb in a linear range of 0.64-16 ng/mL.