

## HUMAN EPHA4 PROTEIN, HIS TAG

货号: 11420

产品全名: 人 EPHA4 蛋白

规格: 10/50/100 µg

基因符号 EK8;HEK8;SEK;TYRO1

目标蛋白: EPHA4

**UNIPROT ID:** P54764

**描述:** Recombinant human EPHA4 protein with C-terminal 6xHis tag

**背景:** This gene belongs to the ephrin receptor subfamily of the protein-tyrosine kinase family. EPH and EPH-related receptors have been implicated in mediating developmental events, particularly in the nervous system. Receptors in the EPH subfamily typically have a single kinase domain and an extracellular region containing a Cys-rich domain and 2 fibronectin type III repeats. The ephrin receptors are divided into 2 groups based on the similarity of their extracellular domain sequences and their affinities for binding ephrin-A and ephrin-B ligands. Multiple transcript variants encoding different isoforms have been found for this gene.

[provided by RefSeq, Jan 2015]

**物种/宿主:** HEK293

**分子量:** The protein has a predicted molecular mass of 59.2 kDa after removal of the signal peptide. The apparent molecular mass of EPHA4-His is approximately 55–70 kDa due to glycosylation.

**分子特征:** EPHA4(Val20–Thr547) 6×His tag

**纯化:** The purity of the protein is greater than 85% as determined by SDS-PAGE and Coomassie blue staining.

**Formulation & Reconstitution:** Lyophilized from nanodisc solubilization buffer (20 mM Tris-HCl, 150 mM NaCl, pH 8.0). Normally 5% – 8% trehalose is added as protectants before lyophilization.

**储存和运输:** Store at –20°C to –80°C for 12 months in lyophilized form. After reconstitution, if not intended for use within a month, aliquot and store at –80°C (Avoid repeated freezing and thawing). Lyophilized proteins are shipped at ambient temperature.

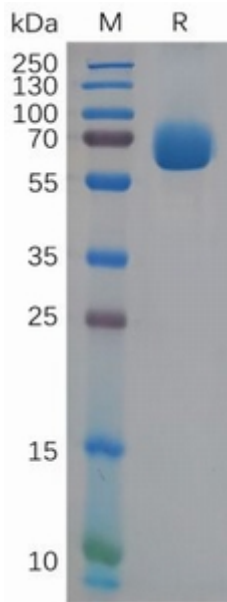


Figure 1. Human EPHA4 Protein, His Tag on SDS-PAGE under reducing condition.