

HUMAN EPHA3 PROTEIN, MFC-HIS TAG

货号: 11171

产品全名: 人 EPHA3 蛋白

规格: 10/50/100 μ g

基因符号 TYRO4;HEK4;ETK1;ETK;EK4;HEK

目标蛋白: EPHA3

UNIPROT ID: P29320

描述: Recombinant human EPHA3 protein with C-terminal mouse Fc and 6xHis tag

背景: This gene belongs to the ephrin receptor subfamily of the protein-tyrosine kinase family. EPH and EPH-related receptors have been implicated in mediating developmental events, particularly in the nervous system. Receptors in the EPH subfamily typically have a single kinase domain and an extracellular region containing a Cys-rich domain and 2 fibronectin type III repeats. The ephrin receptors are divided into 2 groups based on the similarity of their extracellular domain sequences and their affinities for binding ephrin-A and ephrin-B ligands. This gene encodes a protein that binds ephrin-A ligands. Two alternatively spliced transcript variants have been described for this gene.

物种/宿主: HEK293

分子量: The protein has a predicted molecular mass of 85.9 kDa after removal of the signal peptide.

分子特征: EPHA3(Glu21-Gln541) mFc(Pro99-Lys330) 6 \times His tag

纯化: The purity of the protein is greater than 95% as determined by SDS-PAGE and Coomassie blue staining.

Formulation & Reconstitution: Lyophilized from nanodisc solubilization buffer (20 mM Tris-HCl, 150 mM NaCl, pH 8.0). Normally 5% – 8% trehalose is added as protectants before lyophilization.

储存和运输: Store at -20°C to -80°C for 12 months in lyophilized form. After reconstitution, if not intended for use within a month, aliquot and store at -80°C (Avoid repeated freezing and thawing). Lyophilized proteins are shipped at ambient temperature.

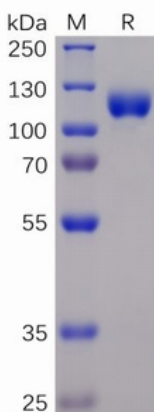


Figure 1. Human EPHA3 Protein, mFc-His Tag on SDS-PAGE under reducing condition.

Human EPHA3, mFc-His Tagged protein ELISA

0.2 μ g of EPHA3, mFc-His Tagged protein per well

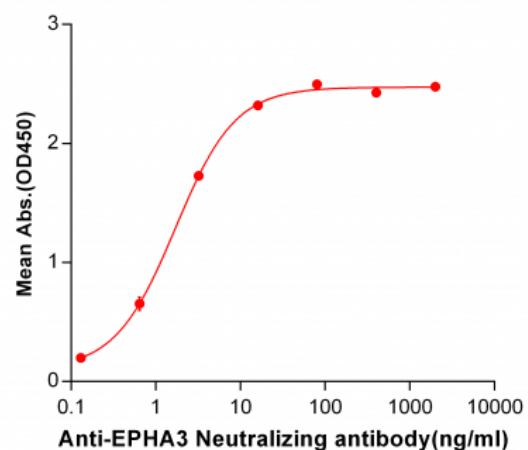


Figure 2. ELISA plate pre-coated by 2 μ g/ml (100 μ l/well) Human EPHA3, mFc-His tagged protein (11171) can bind Anti-EPHA3 Neutralizing antibody 28028 in a linear range of 0.13-16.0 ng/ml.