

## HUMAN EPHA2 PROTEIN, HIS TAG

货号: 11249

产品全名: 人 EPHA2 蛋白

规格: 10/50/100 µg

基因符号 ARCC2;CTPA;CTPPI;CTRCT6;ECK

目标蛋白: EPHA2

**UNIPROT ID:** P29317

**描述:** Recombinant Human EPHA2 Protein with C-terminal 6xHis tag

**背景:** This gene belongs to the ephrin receptor subfamily of the protein-tyrosine kinase family. EPH and EPH-related receptors have been implicated in mediating developmental events, particularly in the nervous system. Receptors in the EPH subfamily typically have a single kinase domain and an extracellular region containing a Cys-rich domain and 2 fibronectin type III repeats. The ephrin receptors are divided into 2 groups based on the similarity of their extracellular domain sequences and their affinities for binding ephrin-A and ephrin-B ligands. This gene encodes a protein that binds ephrin-A ligands. Mutations in this gene are the cause of certain genetically-related cataract disorders.[provided by RefSeq, May 2010]

**物种/宿主:** HEK293

**分子量:** The protein has a predicted molecular mass of 57.0 kDa after removal of the signal peptide. The apparent molecular mass of EPHA2-His is approximately 55-70 kDa due to glycosylation.

**分子特征:** EPHA2 (Ala24-Asn534) 6×His tag

**纯化:** The purity of the protein is greater than 95% as determined by SDS-PAGE and Coomassie blue staining.

**Formulation & Reconstitution:** Lyophilized from nanodisc solubilization buffer (20 mM Tris-HCl, 150 mM NaCl, pH 8.0). Normally 5% - 8% trehalose is added as protectants before lyophilization.

**储存和运输:** Store at -20°C to -80°C for 12 months in lyophilized form. After reconstitution, if not intended for use within a month, aliquot and store at -80°C (Avoid repeated freezing and thawing). Lyophilized proteins are shipped at ambient temperature.

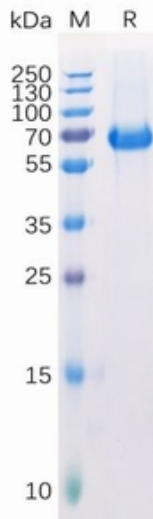


Figure 1. Human EPHA2 Protein, His Tag on SDS-PAGE under reducing condition.

**Human EPHA2, His tagged protein ELISA**  
0.1  $\mu$ g of Human EPHA2, His tagged protein per well

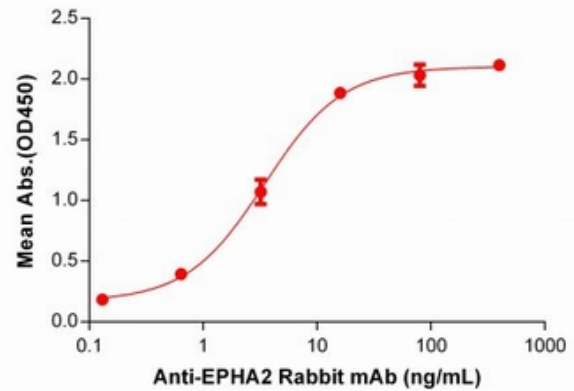


Figure 2. ELISA plate pre-coated by 1  $\mu$ g/ml (100  $\mu$ l/well) Human EPHA2 protein, His Tag (11249) can bind Anti-EPHA2 Rabbit mAb in a linear range of 0.128-16 ng/mL.