

## HUMAN EGFR PROTEIN, HIS TAG

货号: 11218

产品全名: 人 EGFR 蛋白

规格: 10/50/100  $\mu$ g

基因符号 EGFR;RBB;RBB1;ER1;IG61;ENA

目标蛋白: EGFR

**UNIPROT ID:** P00533

**描述:** Recombinant human EGFR Protein with C-terminal 6xHis tag

**背景:** The protein encoded by this gene is a transmembrane glycoprotein that is a member of the protein kinase superfamily. This protein is a receptor for members of the epidermal growth factor family. EGFR is a cell surface protein that binds to epidermal growth factor. Binding of the protein to a ligand induces receptor dimerization and tyrosine autophosphorylation and leads to cell proliferation. Mutations in this gene are associated with lung cancer.

**物种/宿主:** HEK293

**分子量:** The protein has a predicted molecular mass of 69.4 kDa after removal of the signal peptide. The apparent molecular mass of EGFR-His is approximately 100-130 kDa due to glycosylation.

**分子特征:** EGFR(Leu25-Ser645) 6xHis tag

**纯化:** The purity of the protein is greater than 95% as determined by SDS-PAGE and Coomassie blue staining.

**Formulation & Reconstitution:** Lyophilized from nanodisc solubilization buffer (20 mM Tris-HCl, 150 mM NaCl, pH 8.0). Normally 5% - 8% trehalose is added as protectants before lyophilization.

**储存和运输:** Store at  $-20^{\circ}\text{C}$  to  $-80^{\circ}\text{C}$  for 12 months in lyophilized form. After reconstitution, if not intended for use within a month, aliquot and store at  $-80^{\circ}\text{C}$  (Avoid repeated freezing and thawing). Lyophilized proteins are shipped at ambient temperature.

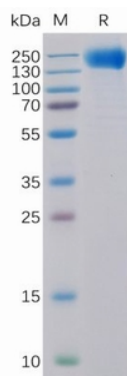


Figure 1. Human EGFR Protein, His Tag on SDS-PAGE under reducing condition.

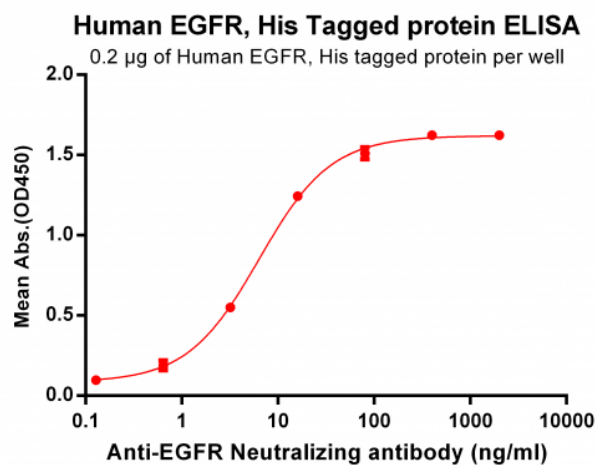


Figure 2. ELISA plate pre-coated by 2  $\mu$ g/ml (100  $\mu$ l/well) Human EGFR, His tagged protein (11218) can bind Anti-EGFR Antibody 28043 in a linear range of 0.64-80.0 ng/ml.