

HUMAN CLU PROTEIN, HIS TAG

货号: 11401

产品全名: 人 CLU 蛋白

规格: 10/50/100 µg

基因符

号 AAG4;APOJ;CLI;KUB1;MGC24903;SGP-2;SGP2;SP-40;TRPM-2;TRPM2

目标蛋白: CLU

UNIPROT ID: P10909

描述: Recombinant human CLU protein with C-terminal 6xHis tag

背景: The protein encoded by this gene is a secreted chaperone that can under some stress conditions also be found in the cell cytosol. It has been suggested to be involved in several basic biological events such as cell death, tumor progression, and neurodegenerative disorders. Alternate splicing results in both coding and non-coding variants.[provided by RefSeq, May 2011]

物种/宿主: HEK293

分子量: The protein has a predicted molecular mass of 50.9 kDa after removal of the signal peptide. The apparent molecular mass of CLU-His is approximately 35-55 kDa due to glycosylation.

分子特征: CLU(Asp23-Glu449) 6xHis tag

纯化: The purity of the protein is greater than 95% as determined by SDS-PAGE and Coomassie blue staining.

Formulation & Reconstitution: Lyophilized from nanodisc solubilization buffer (20 mM Tris-HCl, 150 mM NaCl, pH 8.0). Normally 5% – 8% trehalose is added as protectants before lyophilization.

储存和运输: Store at -20°C to -80°C for 12 months in lyophilized form. After reconstitution, if not intended for use within a month, aliquot and store at -80°C (Avoid repeated freezing and thawing). Lyophilized proteins are shipped at ambient temperature.

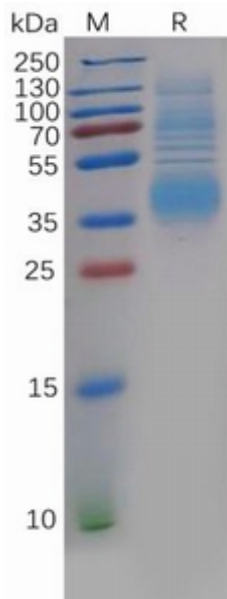


Figure 1. Human CLU Protein, His Tag on SDS-PAGE under reducing condition.