

HUMAN CFH PROTEIN

货号: 12274

产品全名: 人 CFH 蛋白

规格: 10/50/100 µg

基因符号 FH;HF;HF1;HF2;HUS;FHL1;AHUS1;AMBPI;ARMD4;ARMS1;CFHL3

目标蛋白: CFH

UNIPROT ID: P08603

描述: Recombinant human CFH Protein with C-terminal 10xHis tag

背景: This gene is a member of the Regulator of Complement Activation (RCA) gene cluster and encodes a protein with twenty short consensus repeat (SCR) domains. This protein is secreted into the bloodstream and has an essential role in the regulation of complement activation, restricting this innate defense mechanism to microbial infections. Mutations in this gene have been associated with hemolytic-uremic syndrome (HUS) and chronic hypocomplementemic nephropathy. Alternate transcriptional splice variants, encoding different isoforms, have been characterized. [provided by RefSeq, Oct 2011]

物种/宿主: HEK293

分子量: The protein has a predicted molecular mass of 138.4 kDa after removal of the signal peptide. The apparent molecular mass of CFH-His is approximately 130-250 kDa due to glycosylation.

分子特征: CFH(Glu19-Arg1231) 10×His tag

纯化: The purity of the protein is greater than 85% as determined by SDS-PAGE and Coomassie blue staining.

Formulation & Reconstitution: Lyophilized from nanodisc solubilization buffer (20 mM Tris-HCl, 150 mM NaCl, pH 8.0). Normally 5% – 8% trehalose is added as protectants before lyophilization.

储存和运输: Store at -20°C to -80°C for 12 months in lyophilized form. After reconstitution, if not intended for use within a month, aliquot and store at -80°C (Avoid repeated freezing and thawing). Lyophilized proteins are shipped at ambient temperature.

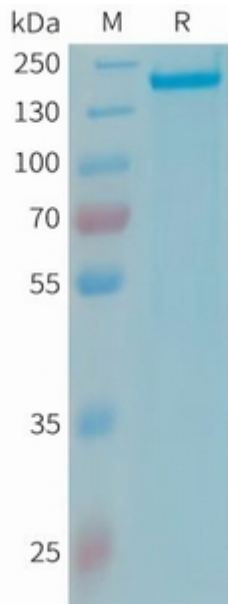


Figure 1. Human CFH Protein, His Tag on SDS-PAGE under reducing condition.