

## HUMAN CD43 PROTEIN, HFC TAG

货号: 11758

产品全名: 人 CD43 蛋白

规格: 10/50/100 µg

基因符号 CD43;GALGP;GPL115;LSN

目标蛋白: CD43

UNIPROT ID: P16150

描述: Recombinant Human CD43 Protein with C-terminal human Fc tag

背景: This gene encodes a highly sialylated glycoprotein that functions in antigen-specific activation of T cells, and is found on the surface of thymocytes, T lymphocytes, monocytes, granulocytes, and some B lymphocytes. It contains a mucin-like extracellular domain, a transmembrane region and a carboxy-terminal intracellular region. The extracellular domain has a high proportion of serine and threonine residues, allowing extensive O-glycosylation, and has one potential N-glycosylation site, while the carboxy-terminal region has potential phosphorylation sites that may mediate transduction of activation signals. Different glycoforms of this protein have been described. In stimulated immune cells, proteolytic cleavage of the extracellular domain occurs in some cell types, releasing a soluble extracellular fragment. Defects in expression of this gene are associated with Wiskott-Aldrich syndrome. [provided by RefSeq, Sep 2017]

物种/宿主: HEK293

分子量: The protein has a predicted molecular mass of 49.6 kDa after removal of the signal peptide. The apparent molecular mass of CD43-hFc is approximately 55-130 kDa due to glycosylation.

分子特征: CD43(Ser20-Arg253) hFc(Glu99-Ala330)

纯化: The purity of the protein is greater than 95% as determined by SDS-PAGE and Coomassie blue staining.

**Formulation & Reconstitution:** Lyophilized from nanodisc solubilization buffer (20 mM Tris-HCl, 150 mM NaCl, pH 8.0). Normally 5% - 8% trehalose is added as protectants before lyophilization.

**储存和运输:** Store at -20°C to -80°C for 12 months in lyophilized form. After reconstitution, if not intended for use within a month, aliquot and store at -80°C (Avoid repeated freezing and thawing). Lyophilized proteins are shipped at ambient temperature.

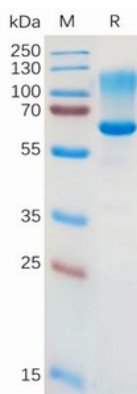


Figure 1. Human CD43 Protein, hFc Tag on SDS-PAGE under reducing condition.

### Human CD43, hFc Tagged protein ELISA

0.2 µg of Human CD43, hFc tagged protein per well

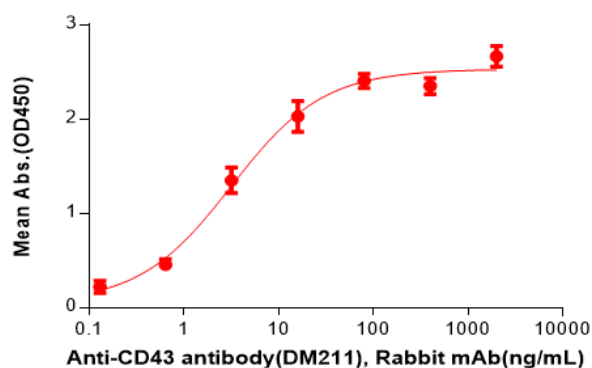


Figure 2. ELISA plate pre-coated by 2 µg/ml (100 µl/well) Human CD43 Protein, hFc Tag(11758) can bind Anti-CD43 antibody(DM211), Rabbit mAb in a linear range of 0.64-16 ng/mL.