

## HUMAN CD300LF PROTEIN, HFC TAG

货号: 11940

产品全名: 人 CD300LF 蛋白

规格: 10/50/100 µg

基因符号 CD300f;CLM-1;CLM1;IgSF13;IREM-1;IREM1;LMIR3;NKIR

目标蛋白: CD300LF

**UNIPROT ID:** Q8TDQ1

**描述:** Recombinant Human CD300LF Protein with C-terminal human Fc tag

**背景:** This gene encodes a member of the CD300 protein family. Members of this family are cell surface glycoproteins with a single IgV-like extracellular domain, and are involved in the regulation of immune response. The encoded protein is an inhibitory receptor. Alternative splicing results in multiple transcript variants. [provided by RefSeq, Jan 2014]

**物种/宿主:** HEK293

**分子量:** The protein has a predicted molecular mass of 41.5 kDa after removal of the signal peptide. The apparent molecular mass of CD300LF-hFc is approximately 55-70 kDa due to glycosylation.

**分子特征:** CD300LF(Thr20-Leu155) hFc(Glu99-Ala330)

**纯化:** The purity of the protein is greater than 95% as determined by SDS-PAGE and Coomassie blue staining.

**Formulation & Reconstitution:** Lyophilized from nanodisc solubilization buffer (20 mM Tris-HCl, 150 mM NaCl, pH 8.0). Normally 5% - 8% trehalose is added as protectants before lyophilization.

**储存和运输:** Store at -20°C to -80°C for 12 months in lyophilized form. After reconstitution, if not intended for use within a month, aliquot and store at -80°C (Avoid repeated freezing and thawing). Lyophilized proteins are shipped at ambient temperature.

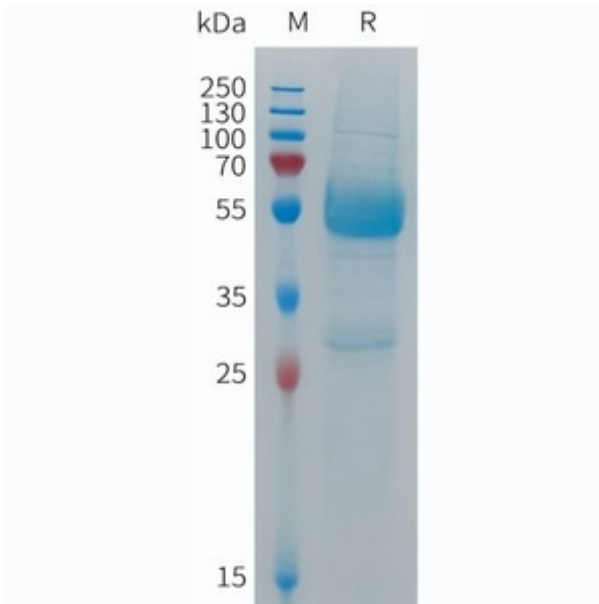


Figure 1. Human CD300LF Protein, hFc Tag on SDS-PAGE under reducing condition.