

## HUMAN CD30 PROTEIN, HIS TAG

货号: 11291

产品全名: 人 CD30 蛋白

规格: 10/50/100 µg

基因符号 TNFRSF8;D30;IS166E;i-1

目标蛋白: CD30

**UNIPROT ID:** P28908

**描述:** Recombinant human CD30 protein with C-terminal 6xHis tag

**背景:** The protein encoded by this gene is a member of the TNF-receptor superfamily. This receptor is expressed by activated, but not by resting, T and B cells. TRAF2 and TRAF5 can interact with this receptor, and mediate the signal transduction that leads to the activation of NF-kappaB. This receptor is a positive regulator of apoptosis, and also has been shown to limit the proliferative potential of autoreactive CD8 effector T cells and protect the body against autoimmunity. Two alternatively spliced transcript variants of this gene encoding distinct isoforms have been reported.

**物种/宿主:** HEK293

**分子量:** The protein has a predicted molecular mass of 39.3 kDa after removal of the signal peptide. The apparent molecular mass of CD30-His is approximately 55-70 kDa due to glycosylation.

**分子特征:** CD30(Phe19-Lys379) 6xHis tag

**纯化:** The purity of the protein is greater than 95% as determined by SDS-PAGE and Coomassie blue staining.

**Formulation & Reconstitution:** Lyophilized from nanodisc solubilization buffer (20 mM Tris-HCl, 150 mM NaCl, pH 8.0). Normally 5% – 8% trehalose is added as protectants before lyophilization.

**储存和运输:** Store at -20°C to -80°C for 12 months in lyophilized form. After reconstitution, if not intended for use within a month, aliquot and store at -80°C (Avoid repeated freezing and thawing). Lyophilized proteins are shipped at ambient temperature.

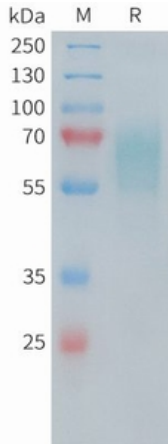


Figure 1. Human CD30 Protein, His Tag on SDS-PAGE under reducing condition.

### Human CD30, His Tagged protein ELISA

0.2 µg of CD30, His Tagged protein per well

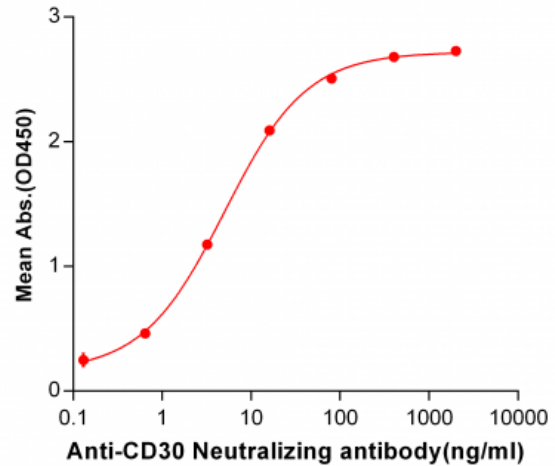


Figure 2. ELISA plate pre-coated by 2 µg/ml (100 µl/well) Human CD30, His tagged protein (11291) can bind Anti-CD30 Neutralizing antibody 28026 in a linear range of 0.13-80.0 ng/ml.

### Human CD30, His Tagged protein ELISA

0.2 µg of CD30, His Tagged protein per well

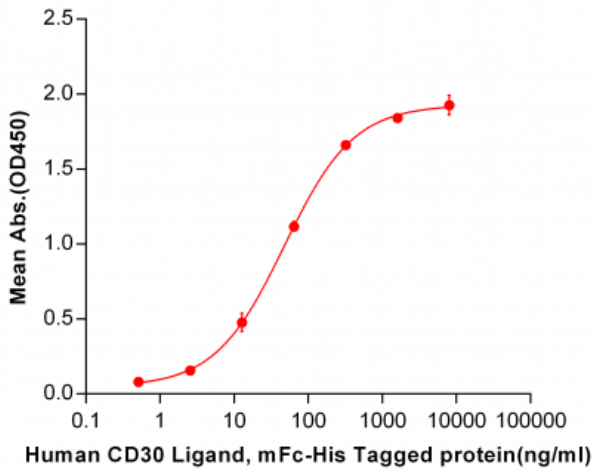


Figure 3. ELISA plate pre-coated by 2 µg/ml (100 µl/well) Human CD30, His tagged protein (11291) can bind Human CD30 Ligand, mFc-His tagged protein 11167 in a linear range of 2.56-320 ng/ml.

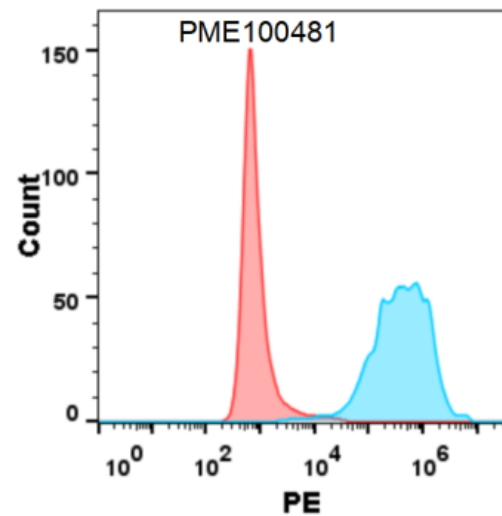


Figure 4. Flow cytometry analysis with 1 µg/ml Human CD30 Protein, His tag (11291) on Expi293 cells transfected with human CD30L (Blue histogram) or Expi293 transfected with irrelevant protein (Red histogram).