

HUMAN CD22 PROTEIN, hFc-HIS TAG

货号: 11133

产品全名: 人 CD22 蛋白

规格: 10/50/100 μ g

基因符号 CD22;SIGLEC2;BL-CAM;SIGLEC-2;Siglec2;SIGLEC2FLJ22814

目标蛋白: CD22

UNIPROT ID: P20273

描述: Recombinant human CD22 protein with C-terminal human Fc and 6xHis tag

背景: B-cell receptor CD22 is also known as Sialic acid-binding Ig-like lectin 2 (Siglec-2), B-lymphocyte cell adhesion molecule (BL-CAM), T-cell surface antigen Leu-14, which belongs to the immunoglobulin superfamily and SIGLEC (sialic acid binding Ig-like lectin) family. CD22 mediates B-cell B-cell interactions, and may be involved in the localization of B-cells in lymphoid tissues. Siglec-2 / CD22 binds sialylated glycoproteins, one of which is CD45. Siglec2 / CD22 plays a role in positive regulation through interaction with Src family tyrosine kinases and may also act as an inhibitory receptor by recruiting cytoplasmic phosphatases via their SH2 domains that block signal transduction through dephosphorylation of signaling molecules.

物种/宿主: HEK293

分子量: The protein has a predicted molecular mass of 102.1 kDa after removal of the signal peptide. The apparent molecular mass of CD22-hFc-His is approximately 130-180 kDa due to glycosylation.

分子特征: CD22(Asp20-Arg687) hFc(Glu99-Ala330) 6 \times His tag

纯化: The purity of the protein is greater than 95% as determined by SDS-PAGE and Coomassie blue staining.

Formulation & Reconstitution: Lyophilized from nanodisc solubilization buffer (20 mM Tris-HCl, 150 mM NaCl, pH 8.0). Normally 5% - 8% trehalose is added as protectants before lyophilization.

储存和运输: Store at -20°C to -80°C for 12 months in lyophilized form. After reconstitution, if not intended for use within a month, aliquot and store at -80°C (Avoid repeated freezing and thawing). Lyophilized proteins are shipped at ambient temperature.

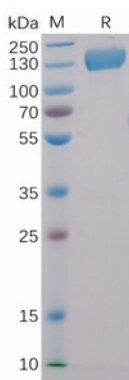


Figure 1. Human CD22, hFc-His Tag on SDS-PAGE under reducing condition.

Human CD22, hFc-His Tagged protein ELISA

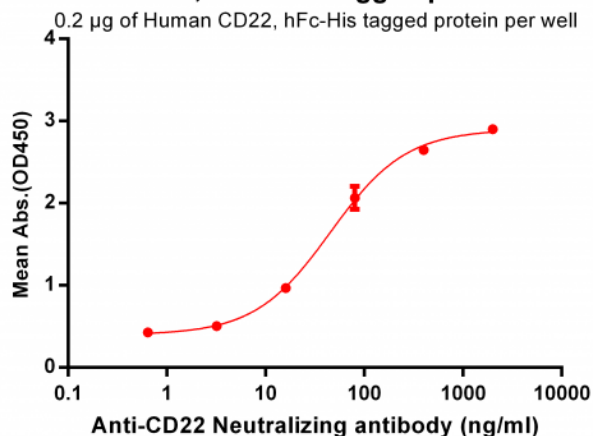


Figure 2. ELISA plate pre-coated by 2 μ g/ml (100 μ l/well) Human CD22, hFc-His tagged protein (11133) can bind Anti-CD22 Neutralizing antibody 28038 in a linear range of 3.2-400 ng/ml.