

HUMAN CD162 PROTEIN, HIS TAG

货号: 11282

产品全名: 人 CD162 蛋白

规格: 10/50/100 µg

基因符号 PSGL-1;SGLI;DI62;ELPLG;electin P ligand

目标蛋白: CD162

UNIPROT ID: Q14242

描述: Recombinant Human CD162 protein with C-terminal 6xHis tag

背景: This gene encodes a glycoprotein that functions as a high affinity counter-receptor for the cell adhesion molecules P-, E- and L-selectin expressed on myeloid cells and stimulated T lymphocytes. As such, this protein plays a critical role in leukocyte trafficking during inflammation by tethering of leukocytes to activated platelets or endothelia expressing selectins. This protein requires two post-translational modifications, tyrosine sulfation and the addition of the sialyl Lewis x tetrasaccharide (sLex) to its O-linked glycans, for its high-affinity binding activity. Aberrant expression of this gene and polymorphisms in this gene are associated with defects in the innate and adaptive immune response. Alternate splicing results in multiple transcript variants.

物种/宿主: HEK293

分子量: The protein has a predicted molecular mass of 31.4 kDa after removal of the signal peptide. The apparent molecular mass of CD162-His is approximately 70-100 kDa due to glycosylation.

分子特征: CD162(Leu18-Cys320) 6×His tag

纯化: The purity of the protein is greater than 95% as determined by SDS-PAGE and Coomassie blue staining.

Formulation & Reconstitution: Lyophilized from nanodisc solubilization buffer (20 mM Tris-HCl, 150 mM NaCl, pH 8.0). Normally 5% – 8% trehalose is added as protectants before lyophilization.

储存和运输: Store at -20°C to -80°C for 12 months in lyophilized form. After reconstitution, if not intended for use within a month, aliquot and store at -80°C (Avoid repeated freezing and thawing). Lyophilized proteins are shipped at ambient temperature.

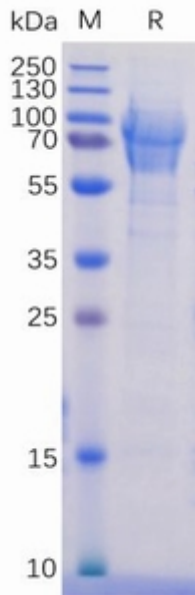


Figure 1. Human CD162 Protein, His Tag on SDS-PAGE under reducing condition.