

## HUMAN CD160 PROTEIN, HIS TAG

货号: 11319

产品全名: 人 CD160 蛋白

规格: 10/50/100 µg

基因符号 BY55;NK1;NK28

目标蛋白: CD160

**UNIPROT ID:** O95971

**描述:** Recombinant human CD160 protein with C-terminal 6xHis tag

**背景:** CD160 is an 27 kDa glycoprotein which was initially identified with the monoclonal antibody BY55. Its expression is tightly associated with peripheral blood NK cells and CD8 T lymphocytes with cytolytic effector activity. The cDNA sequence of CD160 predicts a cysteine-rich, glycosylphosphatidylinositol-anchored protein of 181 amino acids with a single Ig-like domain weakly homologous to KIR2DL4 molecule. CD160 is expressed at the cell surface as a tightly disulfide-linked multimer. RNA blot analysis revealed CD160 mRNAs of 1.5 and 1.6 kb whose expression was highly restricted to circulating NK and T cells, spleen and small intestine. Within NK cells CD160 is expressed by CD56dimCD16 cells whereas among circulating T cells its expression is mainly restricted to TCRgd bearing cells and to TCRab CD8brightCD95 CD56 CD28-CD27-cells. In tissues, CD160 is expressed on all intestinal intraepithelial lymphocytes. CD160 shows a broad specificity for binding to both classical and nonclassical MHC class I molecules. [provided by RefSeq, Jul 2008]

**物种/宿主:** HEK293

**分子量:** The protein has a predicted molecular mass of 15.6 kDa after removal of the signal peptide. The apparent molecular mass of CD160-His is approximately 15-25 kDa due to glycosylation.

**分子特征:** CD160(Ile27-Ser159) 6×His tag

**纯化:** The purity of the protein is greater than 95% as determined by SDS-PAGE and Coomassie blue staining.

**Formulation & Reconstitution:** Lyophilized from nanodisc solubilization buffer (20 mM Tris-HCl, 150 mM NaCl, pH 8.0). Normally 5% – 8% trehalose is added as protectants before lyophilization.

**储存和运输:** Store at -20°C to -80°C for 12 months in lyophilized form. After reconstitution, if not intended for use within a month, aliquot and store at -80°C (Avoid repeated freezing and thawing). Lyophilized proteins are shipped at ambient temperature.

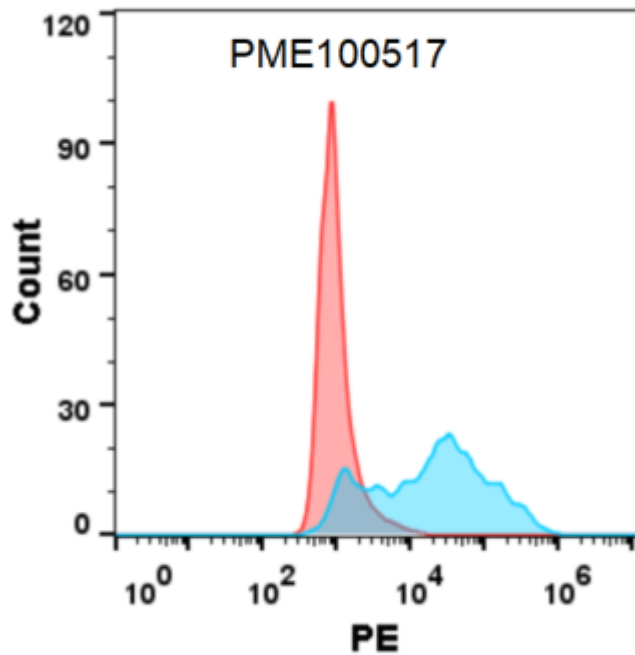


Figure 1. Flow cytometry analysis with Anti-CD160 (DMC270) on Expi293 cells transfected with human CD160 (Blue histogram) or Expi293 transfected with irrelevant protein (Red histogram).