

## HUMAN CD155 PROTEIN, MFC-HIS TAG

货号: 11155

产品全名: 人 CD155 蛋白

规格: 10/50/100 µg

基因符号 PVR;FLJ25946;PVS;CD155;TAGE4;HVED;NECL5

目标蛋白: CD155

**UNIPROT ID:** P15151

**描述:** Recombinant human CD155 protein with C-terminal mouse Fc and 6xHis tag

**背景:** The protein encoded by this gene is a transmembrane glycoprotein belonging to the immunoglobulin superfamily. The external domain mediates cell attachment to the extracellular matrix molecule vitronectin, while its intracellular domain interacts with the dynein light chain Tctex-1/DYNLT1. The gene is specific to the primate lineage, and serves as a cellular receptor for poliovirus in the first step of poliovirus replication. Multiple transcript variants encoding different isoforms have been found for this gene.

**物种/宿主:** HEK293

**分子量:** The protein has a predicted molecular mass of 62.2 kDa after removal of the signal peptide. The apparent molecular mass of CD155-mFc-His is approximately 95-130 kDa due to glycosylation.

**分子特征:** CD155(Trp21-Asn343) mFc(Pro99-Lys330) 6×His tag

**纯化:** The purity of the protein is greater than 95% as determined by SDS-PAGE and Coomassie blue staining.

**Formulation & Reconstitution:** Lyophilized from nanodisc solubilization buffer (20 mM Tris-HCl, 150 mM NaCl, pH 8.0). Normally 5% – 8% trehalose is added as protectants before lyophilization.

**储存和运输:** Store at -20°C to -80°C for 12 months in lyophilized form. After reconstitution, if not intended for use within a month, aliquot and store at -80°C (Avoid repeated freezing and thawing). Lyophilized proteins are shipped at ambient temperature.

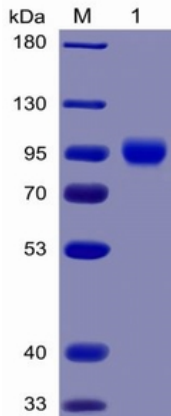


Figure 1. Human CD155 Protein, mFc-His Tag on SDS-PAGE under reducing condition.

## Human CD155, mFc-His Tagged protein ELISA

0.2  $\mu$ g of TIGIT, hFc Tagged protein per well

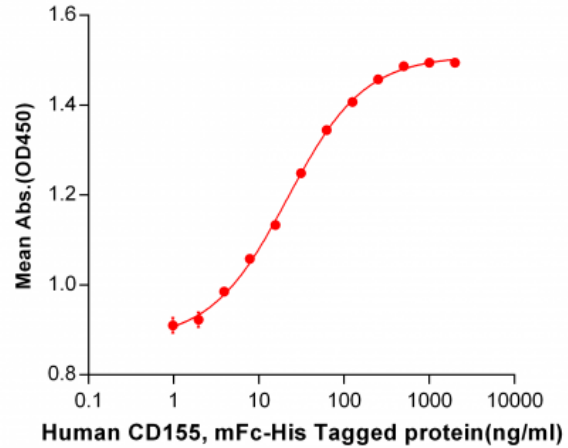


Figure 2. ELISA plate pre-coated by 2  $\mu$ g/ml (100  $\mu$ l/well) Human CD155, mFc-His tagged protein (11155) can bind Human TIGIT, hFc tagged protein 11225 in a linear range of 1.95-125 ng/ml.

## Human CD155, mFc-His tagged protein ELISA

0.1  $\mu$ g of Human CD155, mFc-His tagged protein per well

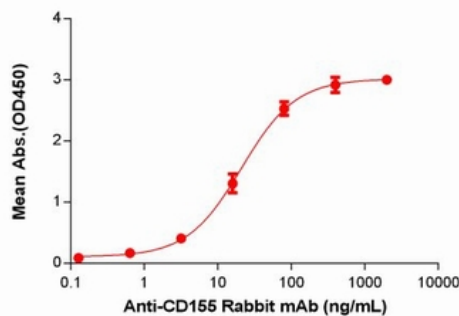


Figure 3. ELISA plate pre-coated by 1  $\mu$ g/ml (100  $\mu$ l/well) Human CD155 Protein, mFc-His Tag(11155) can bind Anti-CD155 Rabbit mAb in a linear range of 3.2-80 ng/mL.