

HUMAN CCL2 PROTEIN, HFC TAG

货号: 11671

产品全名: 人 CCL2 蛋白

规格: 10/50/100 µg

基因符号 HC11;MCAF;MCP-1

目标蛋白: CCL2

UNIPROT ID: P13500

描述: Recombinant human CCL2 protein with C-terminal human Fc tag

背景: This gene is one of several cytokine genes clustered on the q-arm of chromosome 17. Chemokines are a superfamily of secreted proteins involved in immunoregulatory and inflammatory processes. The superfamily is divided into four subfamilies based on the arrangement of N-terminal cysteine residues of the mature peptide. This chemokine is a member of the CC subfamily which is characterized by two adjacent cysteine residues. This cytokine displays chemotactic activity for monocytes and basophils but not for neutrophils or eosinophils. It has been implicated in the pathogenesis of diseases characterized by monocytic infiltrates, like psoriasis, rheumatoid arthritis and atherosclerosis. It binds to chemokine receptors CCR2 and CCR4. Elevated expression of the encoded protein is associated with severe acute respiratory syndrome coronavirus 2 (SARS-CoV-2) infection. [provided by RefSeq, Aug 2020]

物种/宿主: HEK293

分子量: The protein has a predicted molecular mass of 34.8 kDa after removal of the signal peptide. The apparent molecular mass of CCL2-hFc is approximately 35-55 kDa due to glycosylation.

分子特征: CCL2(Gln24-Thr99) hFc(Glu99-Ala330)

纯化: The purity of the protein is greater than 95% as determined by SDS-PAGE and Coomassie blue staining.

Formulation & Reconstitution: Lyophilized from nanodisc solubilization buffer (20 mM Tris-HCl, 150 mM NaCl, pH 8.0). Normally 5% - 8% trehalose is added as protectants before lyophilization.

储存和运输: Store at -20°C to -80°C for 12 months in lyophilized form. After reconstitution, if not intended for use within a month, aliquot and store at -80°C (Avoid repeated freezing and thawing). Lyophilized proteins are shipped at ambient temperature.

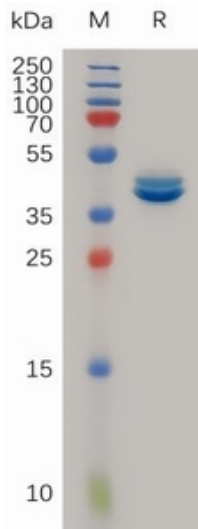


Figure 1. Human CCL2 Protein, hFc Tag on SDS-PAGE under reducing condition.

Human CCL2, hFc tagged protein ELISA
0.2 μ g of Human CCL2, hFc tagged protein per well

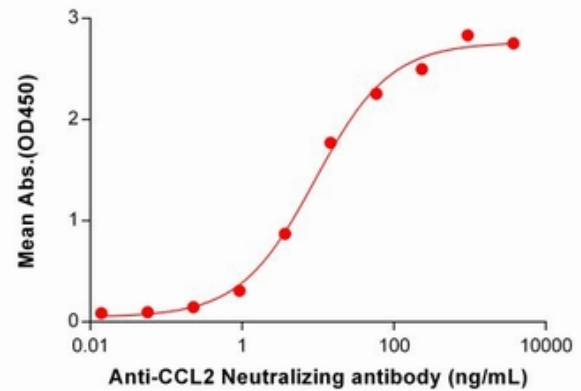


Figure 2. ELISA plate pre-coated by 2 μ g/ml (100 μ l/well) Human CCL2 Protein, hFc Tag (11671) can bind Anti-CCL2 Neutralizing antibody 28121 in a linear range of 0.92-234.38 ng/mL.