

## HUMAN CCL1 PROTEIN

货号: 12032

产品全名: 人 CCL1 蛋白

规格: 10/50/100 µg

基因符号 C-C Motif Chemokine 1;Small-Inducible Cytokine A1;T Lymphocyte-Secreted Protein I-309;CCL1;SCYA1

目标蛋白: CCL1

**UNIPROT ID:** P22362

**描述:** Recombinant Human C-C Motif Chemokine 1 is produced by our E.coli expression system and the target gene encoding Lys24-Lys96 is expressed.

**背景:** Chemokine (C-C Motif) Ligand 1 (CCL1) is a small glycoprotein secreted by activated T cells, which play a central role during immunoregulatory and inflammation processes. Human CCL1 has been assumed to be a homologue of the mouse TCA3. While the two proteins share only approximately 42% amino acid sequence identity, both chemokines contain an extra pair of cysteine residues not found in most other chemokines. CCL1 attracts monocytes, NK cells, and immature B cells and dendritic cells by interacting with cell surface chemokine receptor CCR8. CCL1 is identified as a potent inhibitor of HIV-1 envelope-mediated cell-cell fusion and virus infection.

**物种/宿主:** E.coli

**分子量:** 8.62 KDa

**分子特征:** Not available

**纯化:** Greater than 95% as determined by reducing SDS-PAGE.

**Formulation & Reconstitution:** Lyophilized from nanodisc solubilization buffer (20 mM Tris-HCl, 150 mM NaCl, pH 8.0). Normally 5% – 8% trehalose is added as protectants before lyophilization.

**储存和运输:** Store at -20°C to -80°C for 12 months in lyophilized form. After reconstitution, if not intended for use within a month, aliquot and store at -80°C (Avoid repeated freezing and thawing). Lyophilized proteins are shipped at ambient temperature.

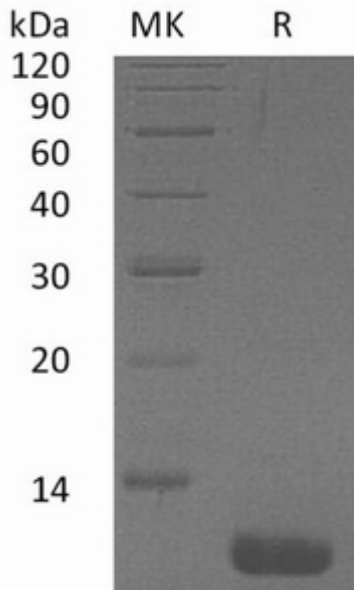


Figure 1. Greater than 95% as determined by reducing SDS-PAGE.