

## HUMAN CALR PROTEIN, HIS TAG

货号: 11669

产品全名: 人 CALR 蛋白

规格: 10/50/100 µg

基因符号 cClqR;CRT;HEL-S-99n;RO;SSA

目标蛋白: CALR

**UNIPROT ID:** P27797

**描述:** Recombinant human CALR protein with C-terminal 6xHis tag

**背景:** Calreticulin is a highly conserved chaperone protein which resides primarily in the endoplasmic reticulum, and is involved in a variety of cellular processes, among them, cell adhesion. Additionally, it functions in protein folding quality control and calcium homeostasis. Calreticulin is also found in the nucleus, suggesting that it may have a role in transcription regulation. Systemic lupus erythematosus is associated with increased autoantibody titers against calreticulin. Recurrent mutations in calreticulin have been linked to various neoplasms, including the myeloproliferative type.[provided by RefSeq, May 2020]

**物种/宿主:** HEK293

**分子量:** The protein has a predicted molecular mass of 47.3 kDa after removal of the signal peptide. The apparent molecular mass of CALR-His is approximately 55-70 kDa due to glycosylation.

**分子特征:** CALR(Glu18-Leu417) 6×His tag

**纯化:** The purity of the protein is greater than 85% as determined by SDS-PAGE and Coomassie blue staining.

**Formulation & Reconstitution:** Lyophilized from nanodisc solubilization buffer (20 mM Tris-HCl, 150 mM NaCl, pH 8.0). Normally 5% – 8% trehalose is added as protectants before lyophilization.

**储存和运输:** Store at -20°C to -80°C for 12 months in lyophilized form. After reconstitution, if not intended for use within a month, aliquot and store at -80°C (Avoid repeated freezing and thawing). Lyophilized proteins are shipped at ambient temperature.

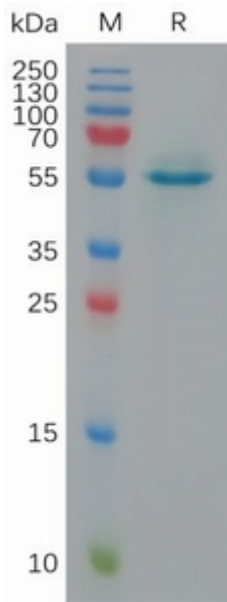


Figure 1. Human CALR Protein, His Tag on SDS-PAGE under reducing condition.