

HUMAN BAFF-R PROTEIN, MFC TAG

货号: 11170

产品全名: 人 BAFF-R 蛋白

规格: 10/50/100 µg

基因符号 BAFFR;NFRSF13C;AFF-R;ROMIX;D268;VID4;rolixin

目标蛋白: BAFF-R

UNIPROT ID: Q96RJ3

描述: Recombinant Human BAFF-R protein with C-terminal mouse Fc

背景: B cell-activating factor (BAFF) enhances B-cell survival in vitro and is a regulator of the peripheral B-cell population. Overexpression of Baff in mice results in mature B-cell hyperplasia and symptoms of systemic lupus erythematosus (SLE). Also, some SLE patients have increased levels of BAFF in serum. Therefore, it has been proposed that abnormally high levels of BAFF may contribute to the pathogenesis of autoimmune diseases by enhancing the survival of autoreactive B cells. The protein encoded by this gene is a receptor for BAFF and is a type III transmembrane protein containing a single extracellular cysteine-rich domain. It is thought that this receptor is the principal receptor required for BAFF-mediated mature B-cell survival.

物种/宿主: HEK293

分子量: The protein has a predicted molecular mass of 33.6 kDa after removal of the signal peptide. The apparent molecular mass of BAFF-R-mFc is approximately 35-55 kDa due to glycosylation.

分子特征: BAFF-R(Ser7-Ala71) mFc(Pro99-Lys330)

纯化: The purity of the protein is greater than 95% as determined by SDS-PAGE and Coomassie blue staining.

Formulation & Reconstitution: Lyophilized from nanodisc solubilization buffer (20 mM Tris-HCl, 150 mM NaCl, pH 8.0). Normally 5% - 8% trehalose is added as protectants before lyophilization.

储存和运输: Store at -20°C to -80°C for 12 months in lyophilized form. After reconstitution, if not intended for use within a month, aliquot and store at -80°C (Avoid repeated freezing and thawing). Lyophilized proteins are shipped at ambient temperature.

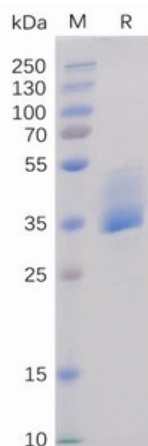


Figure 1. Human BAFF-R Protein, mFc Tag on SDS-PAGE under reducing condition.

Human BAFF-R, mFc Tagged protein ELISA

0.2 μ g of BAFF, hFc Tagged protein per well

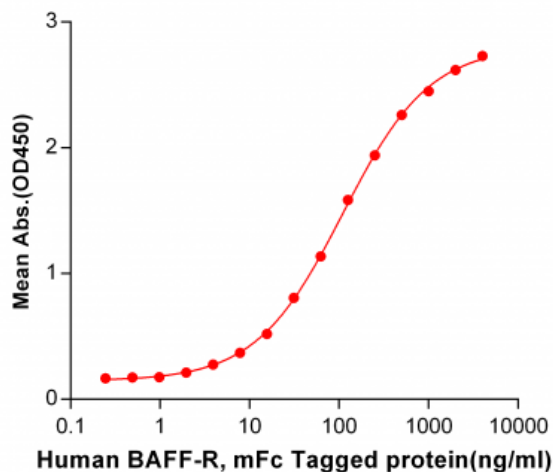


Figure 2. ELISA plate pre-coated by 2 μ g/ml (100 μ l/well) Human BAFF, hFc tagged protein 11169 can bind Human BAFF-R, mFc tagged protein (11170) in a linear range of 0.488-250.0 ng/ml.

Human BAFFR, mFc Tagged protein ELISA

0.2 μ g of Human BAFFR, mFc Tagged protein per well

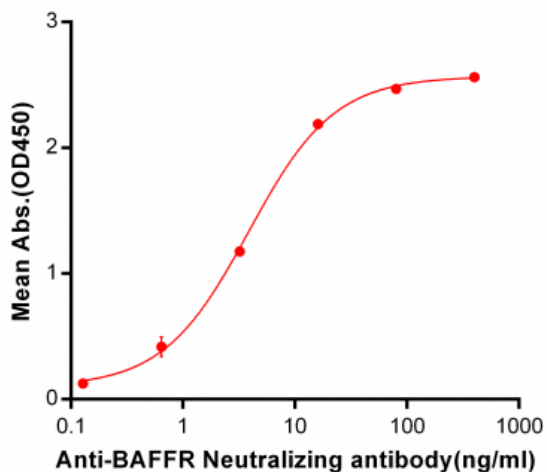


Figure 3. ELISA plate pre-coated by 2 μ g/ml (100 μ l/well) Human BAFFR, mFc tagged protein (11170) can bind Anti-BAFFR Neutralizing antibody 28054 in a linear range of 0.64-16 ng/ml.