

HRAS(G13A)

产品名称: Ras(G13A)

货号: 26191

基因符号: H-Ras; K-Ras; N-Ras

描述: HRAS(G13A) 小鼠单抗

背景: Belongs to the small GTPase superfamily. Ras family binds GDP/GTP and possess intrinsic GTPase activity, alternate between an inactive form bound to GDP and an active form bound to GTP. Activated by a guanine nucleotide-exchange factor (GEF) and inactivated by a GTPase-activating protein (GAP). Located in cell membrane, lipid-anchor, cytoplasmic side and Golgi apparatus membrane.

免疫原: A synthetic peptide from the internal region of HRas which includes the mutation of G13A, human origin.

经过测试的应用: ELISA, WB, IHC

推荐稀释比: ELISA: 1:1000-1:5000 WB: 1:500-1:1000 IHC: 1:50-1:100

Concentration: 1 mg/ml

种属反应性: Mouse

形式: Liquid

克隆性: Monoclonal

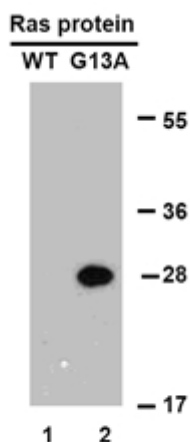
亚型: IgG

纯化: Purified from ascites

成分: PBS (without Mg^{2+} and Ca^{2+}), pH 7.4, 150 mM NaCl, 50% glycerol

种属反应性: Recognizes G13A mutant, but not wild type H-RAS of vertebrates.

储存条件: Store at $-20^{\circ}C$. Avoid repeated freezing and thawing

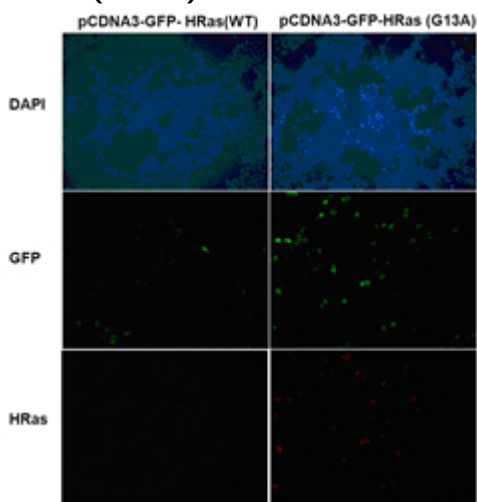


WB: anti-Ras (G13A) mAb

蛋白质印迹:

Western blot analysis of recombinant HRAS(G13A) and wild type proteins. Purified His-tagged HRAS(G13A) protein (lane 2) and corresponding wild type protein (lane 1) were blotted with Anti-HRAS(G13A) monoclonal antibody (货号:26191).

Immunofluorescence:



Immunofluorescence of cells expressing Ras proteins with Anti-HRAS(G13A) antibody. HEK293T cells were transfected with pCDNA3-GFP-HRas (WT) plasmid (left column) or pCDNA3-GFP-HRAS(G13A) plasmid (right column), then fixed and stained with Anti-HRAS(G13A) monoclonal antibody (货号:26191).