

HBEGF (DMC500) IGG1 CHIMERIC MAB

货号: 28273

产品全名: HBEGF(DMC500) IgG1 Chimeric 单抗

基因符号 DTR; DTS; DTSF; HEGFL

描述: HBEGF antibody(DMC500) IgG1 Chimeric 单抗

背景: Growth factor that mediates its effects via EGFR; ERBB2 and ERBB4. Required for normal cardiac valve formation and normal heart function. Promotes smooth muscle cell proliferation. May be involved in macrophage-mediated cellular proliferation. It is mitogenic for fibroblasts; but not endothelial cells. It is able to bind EGF receptor:EGFR with higher affinity than EGF itself and is a far more potent mitogen for smooth muscle cells than EGF. Also acts as a diphtheria toxin receptor.[UniProtKB:Swiss-Prot Function]

经过测试的应用: Flow Cyt

推荐稀释比: Flow Cyt 1:100

种属反应性: Rabbit

亚型: Rabbit:Human Fc chimeric IgG1

纯化: Purified from cell culture supernatant by affinity chromatography

种属反应性: 人 HBEGF

成分: Lyophilized from sterile PBS, pH 7.4. 5 % – 8% trehalose is added as protectants before lyophilization.

储存和运输: Store at -20°C to -80°C for 12 months in lyophilized form.

After reconstitution, if not intended for use within a month, aliquot and store at -80°C (Avoid repeated freezing and thawing).

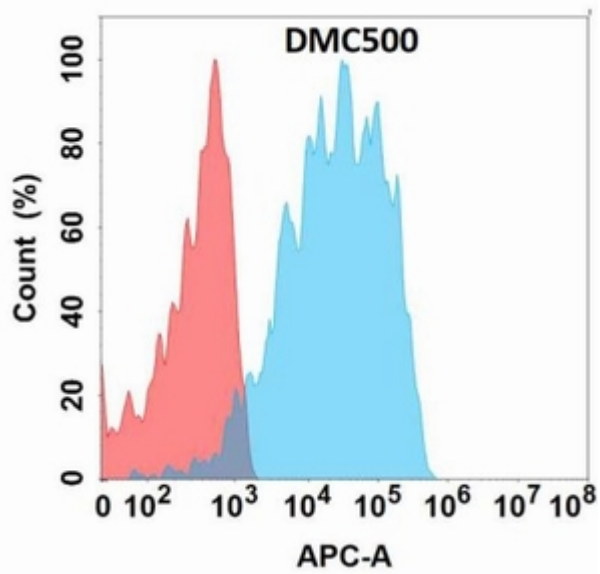


Figure 1. Flow cytometry analysis with Anti-HBEGF(DMC500) on Expi293 cells transfected with human HBEGF (Blue histogram) or Expi293 transfected with irrelevant protein (Red histogram).