

HUMAN GLP1R FULL LENGTH PROTEIN

货号: 11102

产品全名: 人 GLP1R Full Length 蛋白

规格: 10/50/100 µg

基因符号 GLP-1; GLP-1-R; GLP-1R

目标蛋白: GLP1R

UNIPROT ID: P43220

描述: 人 GLP1R full length protein-synthetic nanodisc

背景: A 7-transmembrane protein that functions as a receptor for glucagon-like peptide 1 (GLP-1) hormone, which stimulates glucose-induced insulin secretion. This receptor, which functions at the cell surface, becomes internalized in response to GLP-1 and GLP-1 analogs, and it plays an important role in the signaling cascades leading to insulin secretion. It also displays neuroprotective effects in animal models. Polymorphisms in this gene are associated with diabetes. The protein is an important drug target for the treatment of type 2 diabetes and stroke. Alternative splicing of this gene results in multiple transcript variants.

物种/宿主: HEK293

分子量: The human full length GLP1R protein has a MW of 53.0 kDa

Formulation & Reconstitution: Lyophilized from nanodisc solubilization buffer (20 mM Tris-HCl, 150 mM NaCl, pH 8.0). Normally 5% – 8% trehalose is added as protectants before lyophilization.

储存和运输: Store at -20°C to -80°C for 12 months in lyophilized form. After reconstitution, if not intended for use within a month, aliquot and store at -80°C (Avoid repeated freezing and thawing). Lyophilized proteins are shipped at ambient temperature.

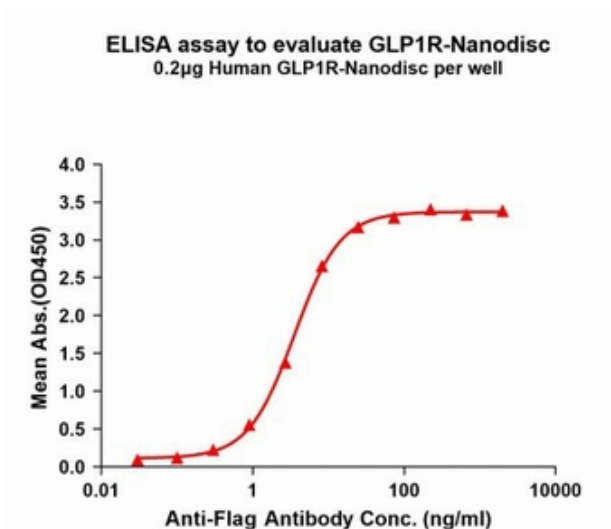


Figure1. Elisa plates were pre-coated with Flag Tag GLP1R-Nanodisc (0.2 µg/per well). Serial diluted anti-Flag monoclonal antibody solutions were added, washed, and incubated with secondary antibody before Elisa reading. From above data, the EC50 for anti-Flag monoclonal antibody binding with GLP1R-Nanodisc is 3.549ng/ml.

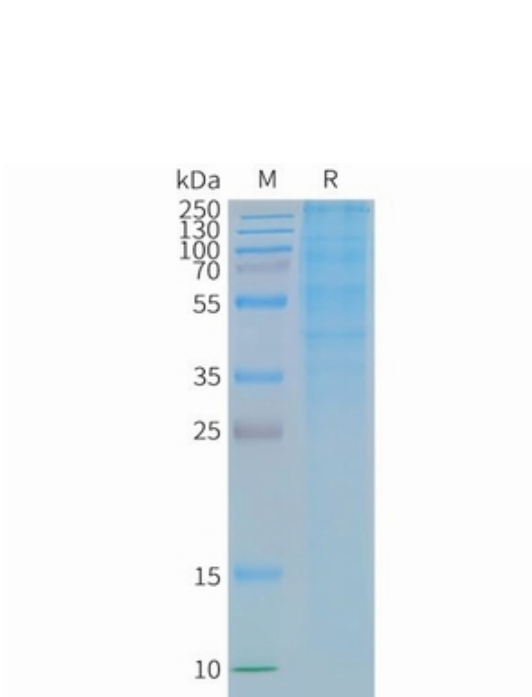


Figure2. Human GLP1R-Nanodisc, Flag Tag on SDS-PAGE