

GAI PAB

产品名称: $G\alpha_i$ 兔多抗

货号: 21006

基因符号: $G\alpha_i$

描述: $G\alpha_i$ 兔多抗

背景: Heterotrimeric G proteins are critical cellular signal transducers. $G\alpha_i$ represents one sub-family of G proteins that could mediate the inhibition of adenylyl cyclases. Other biochemical and physiological functions of $G\alpha_i$ proteins are being explored.

免疫原: Recombinant full length protein of $G\alpha_{i1}$

经过测试的应用: ELISA, WB, IHC

推荐稀释比: ELISA 1:100-1:5000, WB 1:100-1:2000

Concentration: 1 mg/ml

种属反应性: Rabbit

形式: Liquid

克隆性: Polyclonal

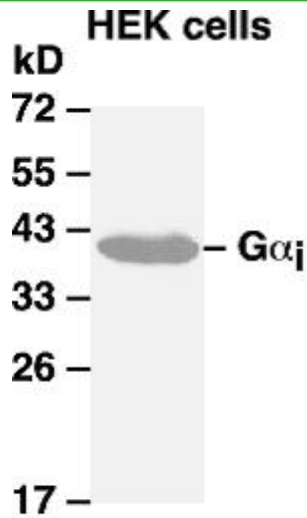
亚型: IgG

纯化: Purified from serum

成分: PBS (without Mg^{2+} and Ca^{2+}), pH 7.4, 150 mM NaCl, 50% glycerol

种属反应性: $G\alpha_i$ antibody recognizes $G\alpha_{i1}$, $G\alpha_{i2}$, and $G\alpha_{i3}$ of vertebrates

储存条件: Store at $-20^{\circ}C$. Avoid repeated freezing and thawing



蛋白质印迹: **WB: anti- $G\alpha_i$ pAb** Western blot analysis of Gi proteins. $G\alpha_i$ plasmid DNA was transiently transfected into HEK-293 cells. Whole-cell lysate was used for western blot with the polyclonal anti $G\alpha_i$ antibody (cat # 21006).