

GA13 PAB

产品名称: G α ₁₃ 兔多抗

货号: 21005

基因符号: Ga13

描述: G α ₁₃ 兔多抗

背景: Heterotrimeric G proteins are essential cellular signal transducers. G α ₁₃ is one of the G proteins that could mediate cell migration and angiogenesis. Other biochemical and physiological functions of G α ₁₃ are being explored.

免疫原: Recombinant full length G α ₁₃ 蛋白

经过测试的应用: ELISA, WB, IHC

推荐稀释比:

ELISA 1:100-1:5000

WB 1:100-1:2000

IHC 1:50-1:100

Concentration: 1 mg/ml

种属反应性: Rabbit

形式: Liquid

克隆性: Polyclonal

亚型: IgG

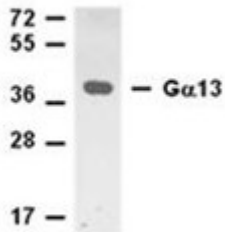
纯化: Purified from serum

成分: PBS (without Mg²⁺ and Ca²⁺), pH 7.4, 150 mM NaCl, 50% glycerol

种属反应性: G α ₁₃ 兔多抗 recognizes G α ₁₃ of vertebrates.

储存条件: Store at -20°C. Avoid repeated freezing and thawing

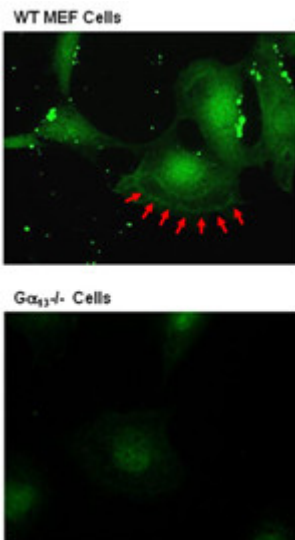
蛋白质印迹:



WB: anti-G α 13 pAb

Western blot analysis of G α ₁₃ proteins.

MEF whole-cell lysates were used for western blot with anti G α ₁₃ 兔多抗 (货号: 21005).



Immunofluorescence of mouse embryonic fibroblast (MEF) cells. Wild-type MEF cells (top panel) and G α ₁₃ double knock-out cells (G α ₁₃ $-/-$, bottom panel) were fixed and stained with anti-G α ₁₃ 兔多抗 (货号: 21005). Arrows indicate the dorsal ruffle structure of one cell.