

## FGFR1(P252T)

产品名称: FGFR1(P252T) 小鼠单抗

货号: 货号:: 26253

基因符号: **FGFR1, BFGFR, CD331, CEK, FGFR, FLG**

描述: **Anti-FGFR1(P252T) 小鼠单抗**

背景: **The protein FGFR1 is highly conserved between members and throughout evolution. This particular family member of FGFR1 binds both acidic and basic fibroblast growth factors and is involved in limb induction. Mutations of FGFR1 protein have been associated with Pfeiffer syndrome, Jackson-Weiss syndrome, Antley-Bixler syndrome, osteoglophonic dysplasia, squamous cell lung cancer and autosomal dominant Kallmann syndrome.**

Immunogen: **A synthetic peptide from the internal region of FGFR1 which includes the mutation of P252T, human origin.**

经过测试的应用: **ELISA, WB, IHC**

推荐稀释比: **ELISA: 1:1000-1:2000WB: 1:500-1:1000IHC: 1:50-1:100**

Concentration: **1 mg/ml**

种属反应性: **Mouse**

形式: **Liquid**

克隆性  **Monoclonal**

亚型: **IgG**

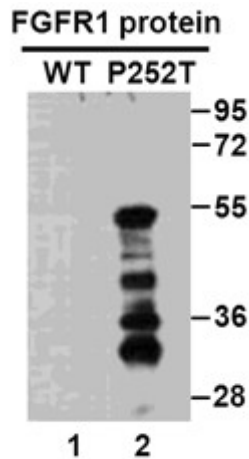
纯化: **Purified from ascites**

Preservative: **No**

成分: **PBS (without Mg<sup>2+</sup> and Ca<sup>2+</sup>), pH 7.4, 150 mM NaCl, 50% glycerol**

种属反应性: **Recognizes P252T mutant, but not wild type FGFR1 of vertebrates.**

储存条件: **Store at -20°C. Avoid repeated freezing and thawing**



蛋白质印迹: WB: Anti-FGFR1 (P252T) mAb Western blot analysis of recombinant FGFR1(P252T) and wild type proteins. Purified His-tagged FGFR1(P252T) protein (22-376aa, ~45KDa, lane 2) and corresponding wild type protein (lane 1) were blotted with Anti-FGFR1(P252T) monoclonal antibody (货号:26253).

免疫荧光: Immunofluorescence: HeLa cells expressing FGFR1 proteins with Anti-FGFR1(P252T) antibody were transfected with pCDNA3-GFP-FGFR1 (WT) or pCDNA3-GFP-FGFR1(P252T) plasmid (right) and stained with Anti-FGFR1(P252T) monoclonal antibody.

