

FOLR1 MAB (FARLETUZUMAB)

目录: 28154

产品名称: FOLR1(Farletuzumab) Monoclonal Antibody

基因符号: FBP;FOLR;FRalpha;NCFTD

描述: FOLR1(farletuzumab) Monoclonal Antibody

背景: Research grade biosimilar. Not for use in therapeutic or diagnostic procedures for humans or animals.

经过测试的应用: ELISA, Flow Cyt

推荐稀释度: ELISA 1:5000-10000, Flow Cyt 1:100

种属反应性: Humanized

亚型: IgG1(E239D, M241L)

纯化: Purified from cell culture supernatant by affinity chromatography

种属反应性: Human FOLR1

成分: Lyophilized from sterile PBS, pH 7.4. 5 % – 8 % trehalose is added as protectants before lyophilization.

储存和运输: Store at -20°C to -80°C for 12 months in lyophilized form. After reconstitution, if not intended for use within a month, aliquot and store at -80°C (Avoid repeated freezing and thawing).

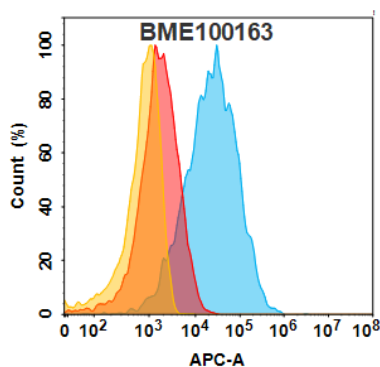


Figure 1. FOLR1 protein is highly expressed on the surface of Expi293 cell membrane. Flow cytometry analysis with 1µg/mL FOLR1(farletuzumab biosimilar) mAb (28154) on Expi293 cells transfected with human FOLR1 (Blue histogram) or Expi293 transfected with irrelevant protein (Red histogram), and Isotype antibody on Expi293 transfected with irrelevant protein (Orange histogram)

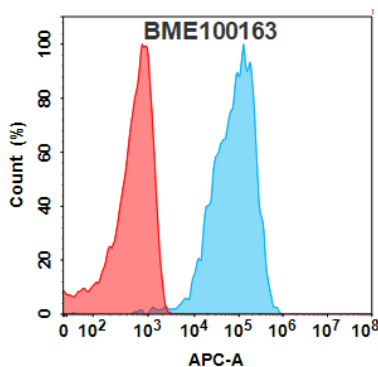


Figure 2. FOLR1 protein is highly expressed on the surface of Hela cell membrane. Flow cytometry analysis with 1µg/mL FOLR1(farletuzumab biosimilar) mAb (28154) on Hela cells (Blue histogram) or isotype control mAb (Red histogram) on Hela cells.

Anti-FOLR1(farletuzumab biosimilar) mAb ELISA

0.2 µg of Human FOLR1, His tagged protein per well

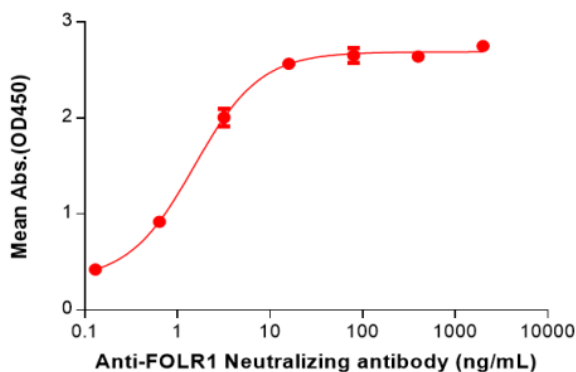


Figure 3. ELISA plate pre-coated by 2 µg/mL (100 µl/well) Human FOLR1 Protein, His Tag(11250) can bind FOLR1(farletuzumab biosimilar) mAb(28154) in a linear range of 0.64-16 ng/mL.

