

## ERBB2 PAB

产品名称: ErbB2 兔多抗

货号: 21202

基因符号: ERBB2/HER2/Neu

描述: ErbB2 兔多抗

背景: The ErbB family is composed of four plasma membrane-bound receptor tyrosine kinases. Amplification or over-expression of the ERBB2 gene occurs in approximately 30% of breast cancers. HER2 is encoded by ERBB2, a known proto-oncogene located at the long arm of human chromosome 17(17q21-q22). HER2 proteins have been shown to form clusters in cell membranes that may play a role in tumorigenesis.

免疫原: A synthetic peptide from the central of ErbB2 protein.

经过测试的应用: ELISA, WB, IHC

推荐稀释比:

ELISA: 1:500-1:5000

WB: 1:200-1:2000

IHC: 1:20-1:200

**Concentration:** 0.2 mg/ml

种属反应性: Rabbit

形式: Liquid

克隆性: Polyclonal

亚型: IgG

纯化: Purified from serum

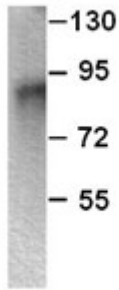
成分: PBS (without  $Mg^{2+}$  and  $Ca^{2+}$ ), pH 7.4, 150 mM NaCl, 50% glycerol

种属反应性: Recognizes ErbB2 of vertebrates.

储存条件: Store at  $-20^{\circ}C$ . Avoid repeated freezing and thawing.

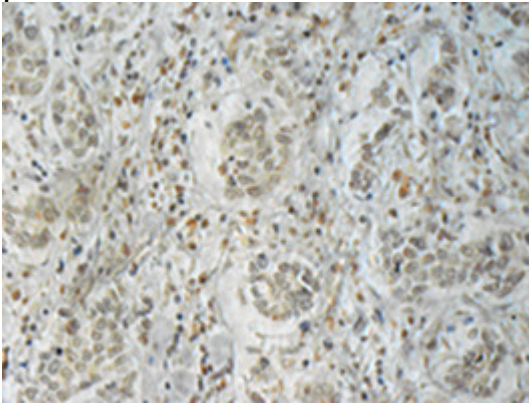
## 蛋白质印迹:

ERBB2 protein



WB: Anti-ERBB2 pAb

Western blot analysis of ErbB2 protein. Purified full length His-tagged ErbB2 protein (货号:10208) was blotted with Anti-ErbB2 兔多抗 (货号:21202).



Immunohistochemical analysis of paraffin-embedded human breast cancer tissue with Anti-ErbB2 兔多抗 (货号:21202). Tissue samples were fixed with formaldehyde and blocked with 1% serum for 15 min at 37 °C. Antigen retrieval was by heat mediation in citrate buffer (pH6). Samples were then incubated with primary antibody (1:50 dilution) overnight at 4 °C. A HRP-conjugated Goat anti-Rabbit IgG (1:50) was used as secondary antibody.