

ERBB2 MAB

产品名称: ERBB2 小鼠单抗

货号: 26127

基因符号: ERBB2/HER2/Neu/c-Neu

描述: ERBB2 小鼠单抗

背景: The HER-2/neu oncogene, a member of the epidermal growth factor receptor or erb-B gene-like family, encodes a transmembrane tyrosine kinase receptor that mediates extracellular signals activated by epidermal growth factors. Her2 abnormal has been strongly associated with many malignant tumors, especially with breast cancers. The expression level of Her2 is an important criteria in clinic evaluating of the progression of breast cancer.

免疫原: A synthetic peptide from the C-terminal region of ERBB2, human origin

经过测试的应用: ELISA, WB, IHC

推荐稀释比: ELISA: 1:1000-1:5000WB: 1:500-1:2000IHC: 1:50-1:200

Concentration: 1mg/ml

种属反应性: Mouse

形式: Liquid

克隆性: Monoclonal

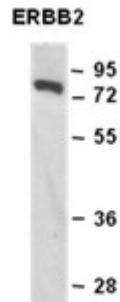
亚型: IgG

纯化: Purified from ascites

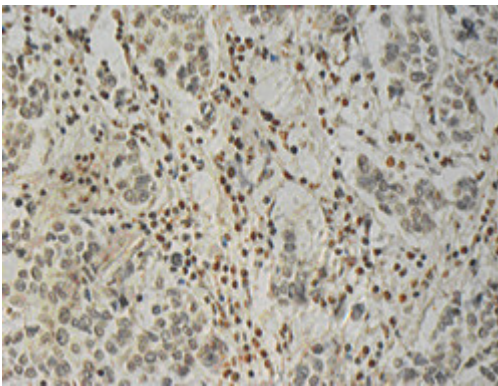
成分: PBS (without Mg²⁺ and Ca²⁺), pH 7.4, 150 mM NaCl, 50% glycerol

种属反应性: Recognizes Erb-B2 of vertebrates.

储存条件: Store at -20°C. Avoid repeated freezing and thawing



蛋白质印迹: WB: Anti-ERBB2 mAb Western blot analysis of recombinant Erb-B2 protein. Purified His-tagged Erb-B2 protein (货号:10208) was blotted with anti-Erb-B2 monoclonal antibody (货号:26127). **Immunohistochemistry:**



Immunohistochemical analysis of paraffin-embedded human breast cancer tissue with anti-Erb-B2 monoclonal antibody (货号:26127). Tissue samples were fixed with formaldehyde and blocked with 1% serum for 15 min at 37 °C. Antigen retrieval was by heat mediation in citrate buffer (pH6). Samples were then incubated with primary antibody (1:50 dilution) overnight at 4°C. A HRP-conjugated Goat anti-mouse IgG (1:50 dilution) was used as secondary antibody.