

## EPCAM (DM147) RABBIT MAB

货号: 28491

产品全名: EPCAM(DM147) 兔单克隆抗体

基因符

号 EPCAM;TACSTD1;TROP1;CD326;DIAR5;EGP2;EGP314;EGP40;ESA;GA733-2;HNPCC8;HNPCC-8;KS1:4;KSA;M4S1;MIC18;MK1

描述: EPCAM antibody(DM147) 兔单克隆抗体

背景: This gene encodes a carcinoma-associated antigen and is a member of a family that includes at least two type I membrane proteins. This antigen is expressed on most normal epithelial cells and gastrointestinal carcinomas and functions as a homotypic calcium-independent cell adhesion molecule. The antigen is being used as a target for immunotherapy treatment of human carcinomas. Mutations in this gene result in congenital tufting enteropathy.

经过测试的应用: ELISA; Flow Cyt

推荐稀释比: ELISA 1:5000-10000; Flow Cyt 1:100

种属反应性: Rabbit

亚型: Rabbit IgG

纯化: Purified from cell culture supernatant by affinity chromatography

种属反应性: 人 EPCAM

成分: Lyophilized from sterile PBS, pH 7.4. 5% - 8% trehalose is added as protectants before lyophilization.

储存和运输: Store at -20°C to -80°C for 12 months in lyophilized form. After reconstitution, if not intended for use within a month, aliquot and store at -80°C (Avoid repeated freezing and thawing).

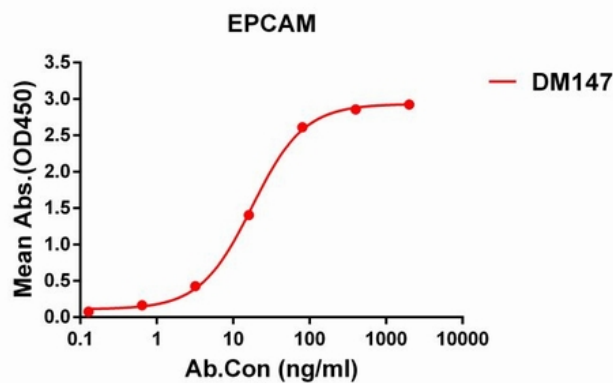


Figure 1. ELISA plate pre-coated by 1 µg/ml (100 µl/well) Human EPCAM protein, His tagged protein 11191 can bind Rabbit anti-EPCAM monoclonal antibody (clone: DM147) in a linear range of 5-100 ng/ml.

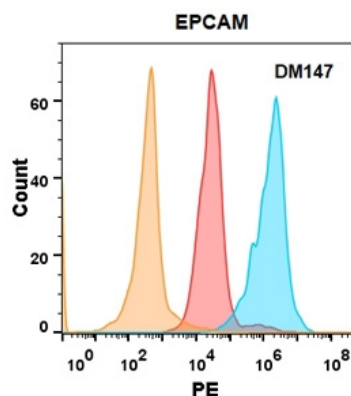


Figure 2. EPCAM protein is highly expressed on the surface of Expi293 cell membrane. Flow cytometry analysis with Anti-EPCAM (DM147) on Expi293 cells transfected with human EPCAM (Blue histogram) or Expi293 transfected with irrelevant protein (Red histogram), and Isotype antibody on Expi293 transfected with irrelevant protein (Orange histogram).