

CXCL10 MAB (ELDELUMAB)

货号: 28128

产品全名: CXCL10(Eldelumab) 单抗

基因符号 Gamma-IP10;IP-10;SCYB10;INP10

描述: CXCL10(eldelumab) 单抗

背景: Research grade biosimilar. Not for use in therapeutic or diagnostic procedures for humans or animals.

经过测试的应用: ELISA; Flow Cyt

推荐稀释比: ELISA 1:5000-10000; Flow Cyt 1:100

种属反应性: Homo sapiens

亚型: IgG1

纯化: Purified from cell culture supernatant by affinity chromatography

种属反应性: 人 CXCL10

成分: Lyophilized from sterile PBS, pH 7.4. 5% – 8% trehalose is added as protectants before lyophilization.

储存和运输: Store at -20°C to -80°C for 12 months in lyophilized form. After reconstitution, if not intended for use within a month, aliquot and store at -80°C (Avoid repeated freezing and thawing).

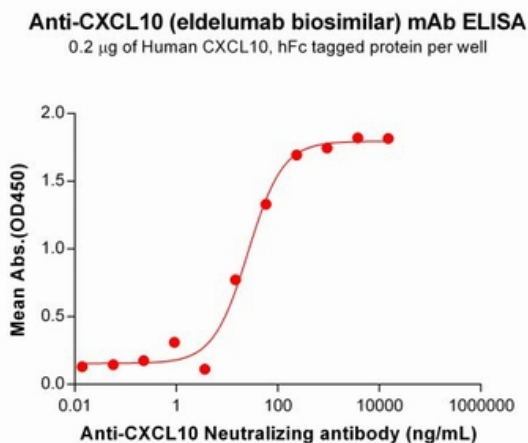


Figure 1. ELISA plate pre-coated by $2\ \mu\text{g}/\text{mL}$ ($100\ \mu\text{l}/\text{well}$) Human CXCL10 Protein, hFc Tag (PME101121) can bind Anti-CXCL10 Neutralizing antibody (28128) in a linear range of $3.66\text{--}234.38\ \text{ng}/\text{mL}$. In order to specifically detect 28128, mouse anti-human Fab-specific antibody was used as detection antibody.

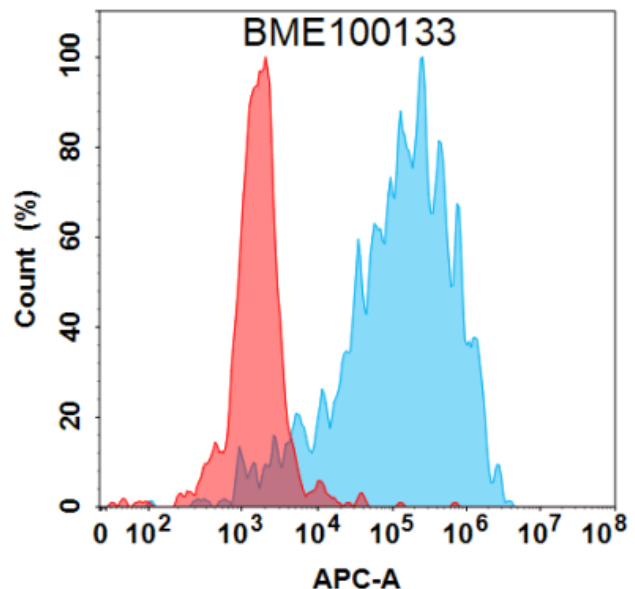


Figure 2. Flow cytometry analysis under cell membrane permeable condition with $1\ \mu\text{g}/\text{mL}$ Anti-CXCL10 (eldelumab biosimilar) mAb (28128) on Expi293 cells transfected with Human CXCL10 protein (Blue histogram) or Expi293 transfected with irrelevant protein (Red histogram).



Product Description

Pioneering GTPase and Oncogene Product Development since 2010
