

EGFR(G863D)

产品名称: EGFR(G863D) 小鼠单抗

货号: 26119

基因符号: EGFR/HER1/ERBB1

描述: EGFR(G863D) 小鼠单抗

背景: EGFR is a receptor tyrosine kinase binding ligands of the EGF family and activating several signaling cascades to convert extracellular cues into appropriate cellular responses. It activates at least 4 major downstream signaling cascades including the RAS-RAF-MEK-ERK, PI3 kinase-AKT, PLC gamma-PKC and STATs modules. Defects in EGFR are associated with lung cancer (LNCR).

免疫原: A synthetic peptide from the internal region of EGFR which includes the mutation of G863D, human origin.

Tested Applications: ELISA, WB, IF, IHC

推荐稀释比:

ELISA: 1:1000-1:5000

WB: 1:1000-1:5000

IHC: 1:50-1:100

Concentration: 1 mg/ml

种属反应性: Mouse

形式: Liquid

克隆性: Monoclonal

亚型:

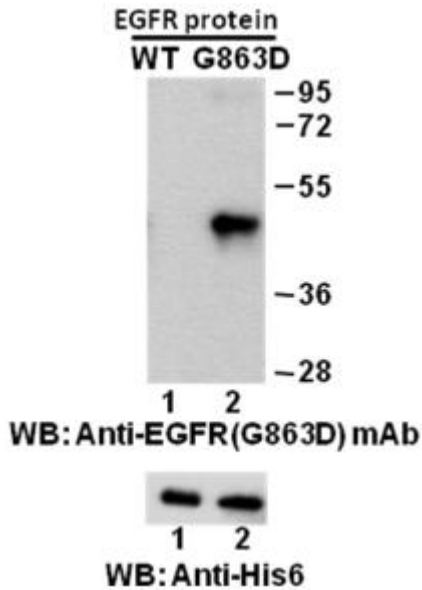
纯化: Purified from ascites

成分: PBS (without Mg^{2+} and Ca^{2+}), pH 7.4, 150 mM NaCl, 50% glycerol

种属反应性: Recognizes EGFR(G863D), but not wild type EGFR from vertebrates.

储存条件: Store at $-20^{\circ}C$. Avoid repeated freezing and thawing.

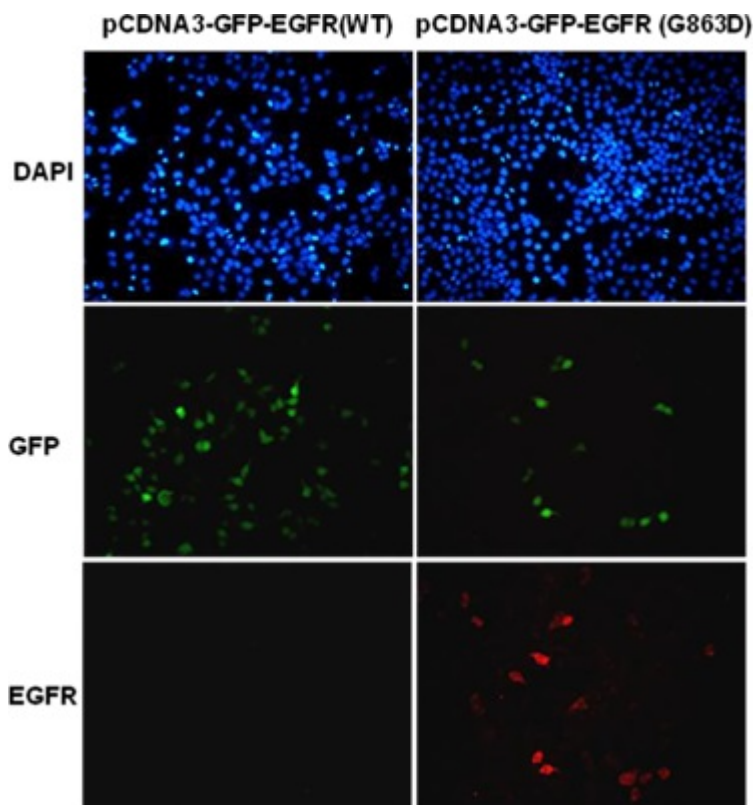
蛋白质印迹:



Western blot analysis of recombinant EGFR(G863D) and wild type proteins.

Purified His-tagged EGFR(G863D) protein (amino acid 702-987) (货号:10222) and corresponding wild type protein (货号:10210) were blotted with anti-EGFR(G863D) 小鼠单抗 (货号:26119). Proteins loading were blotted with anti-His-tag monoclonal antibody (货号:28004).

Immunofluorescence:



antibody.

HEK293T cells were transfected with pCDNA3-GFP-EGFR (WT) plasmid (left column) or pCDNA3-GFP-EGFR(G863D) plasmid (right column), then fixed and stained with anti-EGFR(G863D) monoclonal antibody (货号:26119).